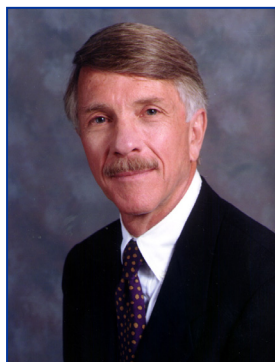


# PSYCHIATRY NEWSLETTER

Department of Psychiatry and Behavioral Sciences & Institute of Psychiatry  
Medical University of South Carolina

Volume 2, April 2005



## Message from the Chairman

*John M. Oldham, M.D.*

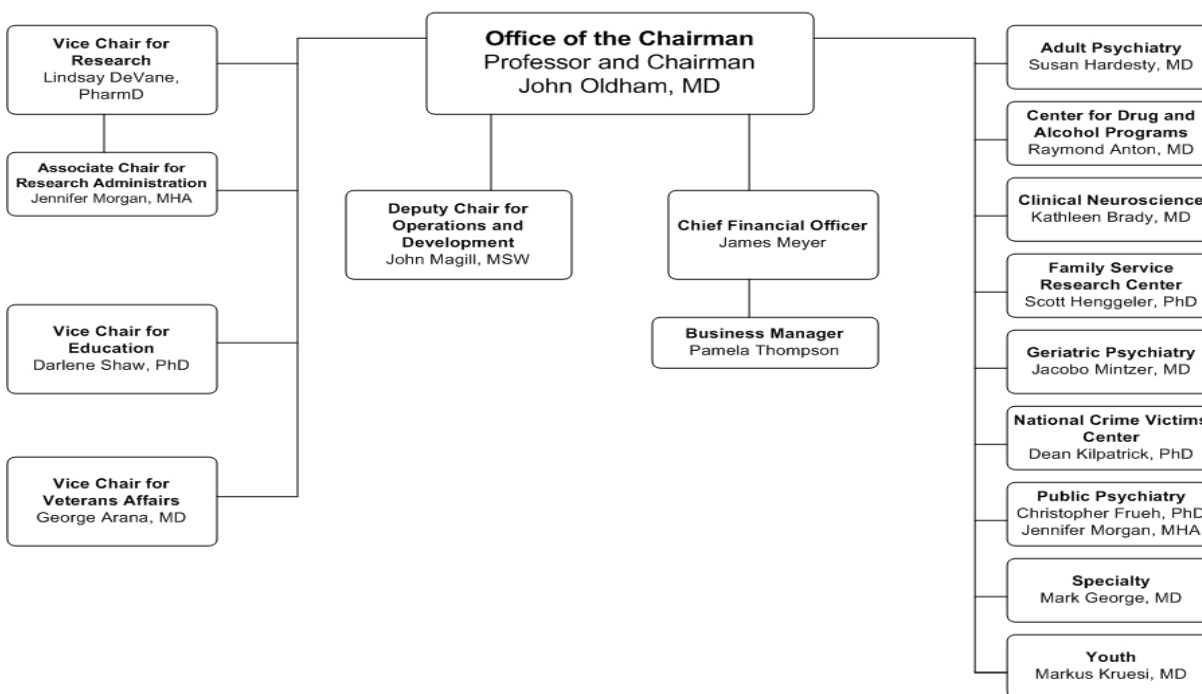
In the first quarter of 2005, the Department and the Institute launched the new year on a strong footing. The MUSC Board of Trustees asked me to make a presentation to the Board about the department's accomplishments and progress, which I was pleased to do on February 10, 2005. After presenting our current organizational table, shown below, I reviewed a few highlights of the research, education, and clinical care being done by faculty in our academic divisions. Several bar charts were presented showing the department's increasing fiscal stability, in spite of a 28% reduction of state allocation funds since FY02.

Research activity continues at very productive levels, and research mentorship is reflected in 4 NIH T-32 postdoctoral training grants, 10 funded career investigator awards, 3 VA Merit awards, and a number of new applications in review. It was a pleasure to describe to the Board the continued effective integration of the department and the Institute, augmented by the new shared financial role of Jamie Meyer, our new CFO, working with both the department and the hospital. On the clinical side, the case mix of inpatients is becoming more diverse, and referral access for outpatient care is improving. Our educational programs continue to grow and to improve, with an impressive amount of teaching effort provided for the College of Medicine by our faculty. The presentation to the Board was a "good news" message, and from feedback afterwards, the response of the Board was extremely positive.

Recent highlights of the activities in the department and the Institute are outlined in this quarter's newsletter in the pages that follow. Outstanding new psychology interns and psychiatry residents will be joining us, many faculty have been selected or nominated for awards, industrious leadership in the clinical enterprise moves us forward, and new research awards are announced regularly, in spite of increasing constraints on federal funding for research.

## DEPARTMENT OF PSYCHIATRY AND BEHAVIORAL SCIENCES ORGANIZATIONAL CHART

Effective November 22, 2004





## Message from the Administrator

*Joan Herbert, R.N.*

As mentioned in the first newsletter, the foundation of the vision for the Institute of Psychiatry includes the following four characteristics: a) consumer focus, b) cutting edge evidence-based treatment, c) compassionate and safe environment of care, and d) cost consciousness. In this issue we will review five activities designed to enhance the Institute's *Consumer Focus*.

The Consumer Advisory Council was established in 1997. The Council is comprised of individuals who have a psychiatric or substance abuse diagnosis themselves or who have a family member who does. The Council meets quarterly and has provided invaluable input into decision-making and planning over the last eight years. If you have patients or family members that you would recommend to be members of the Advisory Council, please let us know.

We have also recently formed the Institute Customer Service Committee. Mary Beth Brock, MHS, OTR/L and Bonnie Jones, RN chair this committee of individuals representing multiple disciplines and services. The charge of this committee is to identify opportunities to improve our performance in the eyes of our customers including patients, family members, referrers, trainees and staff. The Committee is already generating useful recommendations. If you have observations or recommendations about our service, please be sure to share your thoughts with Mary Beth or Bonnie!

The Institute regularly solicits the feedback of our patients, across the continuum of care, using Patient Satisfaction Surveys. The inpatient units utilize a tool developed by the Picker Institute with data aggregation and reporting by the National Research Corporation. Currently the Institute and the Medical Center as a whole, have established targets for two questions: "How would you rate the overall quality of care you received?" and "Would you recommend us to others?" We are currently reaching our goal in relation to overall quality of care but not in terms of recommending us to others. Each unit has developed an action plan based on survey responses specific to the unit with the objective of increasing the number of respondents who indicate they would recommend the Institute. The survey form also provides the patient with an opportunity to identify individuals who had a particularly positive impact on their stay. A list of those recently mentioned is included at the end of this article. I am pleased to have this opportunity to recognize these team members. It is through positive individual contributions such as these that we are able to make treatment experiences positive for our clients!

Later this summer we will host twenty-five Institute participants in the National Alliance for the Mentally Ill (NAMI) Provider Education Series. The purpose of this educational series is to raise awareness among participants about what it is like to live with a serious mental illness. The series involves a significant time commitment (30 hours) for participants, but we believe the potential for increasing consumer focus within our programs as a result is worth the investment of time.

Last, the Adult Service is beginning to evaluate the potential of adopting the Sanctuary Model within our inpatient units. This model is based on current knowledge about trauma responses and strives to create treatment environments that are sensitive, healing and trauma free. I look forward to sharing more about this new initiative in future issues.

The IOP Magnet Steering Committee chaired by Linda Lewis, MN, RN, CS, continues to pour it on as the Medical Center moves closer to its application deadline for Magnet Recognition. As you may have noticed, bulletin boards have been popping up in various locations throughout the IOP showcasing the concepts of Magnet Culture. During the week of March 21<sup>st</sup>, the steering committee went one step further with a multi media Magnet display in the IOP lobby. The goal was to reach as many interdisciplinary staff and faculty as possible. The display was staffed by committee members at different intervals over a two day period. The presentation reached 165 employees from all disciplines including dietary, housekeeping, maintenance, nurses, attendings, residents, students, researchers, and security officers. As a result of this effort, there is an increased awareness about what Magnet Recognition will mean to the Medical Center Authority Hospital as well as the Institute of Psychiatry.

The IOP Magnet Steering Committee (listed below) would like to extend a special thanks to those of you who visited the display. Thanks to your interest and support we are on our way to being the first hospital in the state of South Carolina to achieve Magnet Status.

Andrew Atkinson, RNC, MHA  
 Wendy Bobseine, RN  
 Gene Boyd, RNCS, MSN  
 Mary Beth Brock, MHS, OTR/L  
 Wanda Brown, RN  
 Kimberly Bush, MD

Harriet Cooney, RN, MSN  
 Debra Davis, RN, MSN, FNP  
 Claire Freeman, BSN, RN  
 Renate Friason, MSN, RN  
 Janice Hazy, MSN, RN, CNS  
 Christina Hogarth, MS, RN

Linda Lewis, RN, MN, CS  
 Karen McHugh, BSN, RNC  
 Alison Meeks, RN, MN, CNS  
 Steve Proctor, RNC

Please take a moment to appreciate the following individuals who were cited by our consumers as having a particularly positive impact on them.

**2 North:** Yasmin Jilla, Sandra Tolen, Misty Deason; **3 North:** Marietta Smalls, Annette Warren, Peter Jurow, Jessie Bugbee-Stewart, Jocelyn Gauthier, Natalie Lewis, Brad Moultrie, Corey Shaw, Betsy Gallivan, Sharon Spencer, Jessica Bugbe-Stewart, Pamela Hartley, Sylvia Legare; **4 North:** Betsy Lapp, Jude Johnson, Brian Berry, Gene Woodall, Sandy Trudeau, Bob Raynor; **Trident:** Mike Wilcox.

## Research News

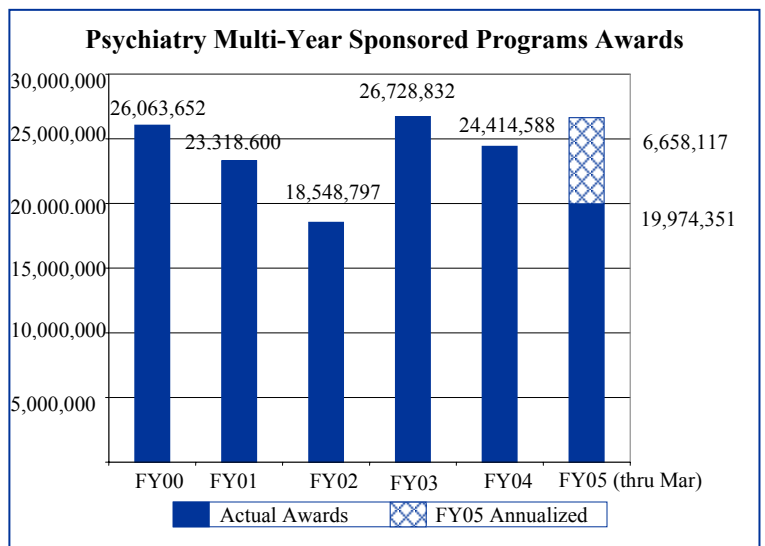
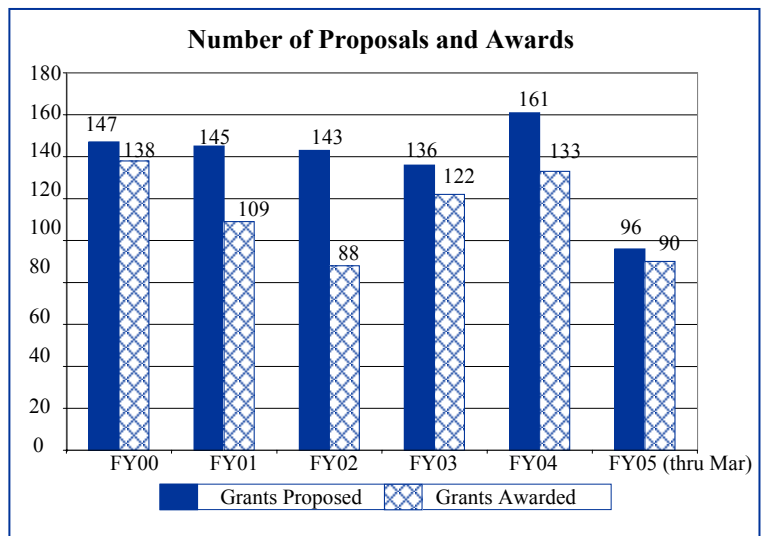
### Research Update

Our Sponsored Programs mission continues to be an extremely active enterprise for the Department of Psychiatry. We have 195 active sponsored research, training and career development awards, with 54 separate prime grants from the National Institutes of Health currently ongoing.

Our number of incoming awards for this fiscal year through March total 96. Of those, 35 are new grants or contracts with 16 new federal awards (11 NIH) and 19 new awards from state or corporate sponsors.

We have submitted almost 100 proposals for new grants or contracts during the period of July 04 through March 05. Some of our investigators have received very good scores with funding anticipated in either this fiscal year or early next fiscal year. With much of our funding coming from the National Institutes of Health, we are keeping a close watch on the NIH pay lines.

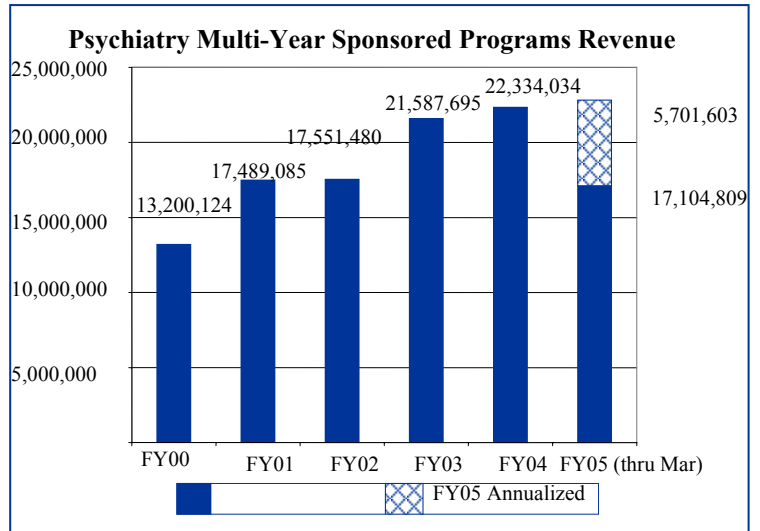
Sponsored program revenue continues its multi-year upward trend. In the last charts below, we have shown multi fiscal year data for both actual awards and revenue thru March 2005. Also shown is a projection of anticipated award and revenue information based on an annualization using averages of the receipts through March.



However, as we all know, there are great fluctuations from month to month, so these numbers could vary significantly from the actual awards and revenues when finally tallied at the end of the fiscal year.

The NIH ranking data should be coming out before our next newsletter. It will be forwarded to you as soon as it is made available through email.

*Editorial Note: Jennifer Morgan Shambrook received the Society of Research Administrators International Distinguished Faculty Award. This award is a lifetime professional achievement award. Congratulations!*



## Educational Programs

### Medical Student Education

*Darlene Shaw, Ph.D.*

In the medical student education program, we use a continuous quality improvement model. We closely monitor course evaluation scores and seek feedback from students at the conclusion of each clerkship. Based on feedback from students and attendings, we recently discontinued the peer teaching requirement and decreased the number of outpatient assignments for 3rd year medical students. We also eliminated some of the didactics presented to 4th year students and re-focused the presentation that each student gives at the end of the clerkship, encouraging them to make their presentation about a psychiatric topic that pertains to the area of medicine they are pursuing as a career.

Through a program coordinated by the College of Medicine Dean's office, for the first time 2nd year students have the opportunity to schedule an elective experience in a clinical area at MUSC that is of interest to them. Students may elect to attend morning rounds or spend 1/2 day in an outpatient clinic. We were gratified that 24 2nd year medical students selected Psychiatry for their brief elective.



*Special Editorial Note: Dr. Darlene Shaw was the recipient of the 2005 Health Sciences Foundation Teaching Excellence Award in the Educator-Mentor category. Dr. Shaw will be formally recognized in August at the Faculty Convocation. As a continual recognition of her contributions, Dr. Shaw will also receive a medallion to be worn with her academic regalia at all future graduations. Dr. Shaw has received numerous teaching awards over the years, including the South Carolina Psychological Association 2003 Award for Outstanding Teaching.*



In April, Chris Pelic, M.D. received the College of Medicine Teaching Faculty Award based upon his role as the Course Director and principal lecturer in the Psychopathology course for medical students. This prestigious award signifies that the 2nd year medical students voted Dr. Pelic, from among his peers, to be their best teacher in their 2nd year courses. Dr. Pelic received a plaque at an awards ceremony. Dr. Pelic's accomplishment is particularly significant, given that this was the first year that he had responsibility for teaching this course.

*Please join us in congratulating both Dr. Shaw and Dr. Pelic.*

## Residency Training

*Alberto Santos, M.D., Training Director*

*D. Walter Hiott, M.D., Co-Training Director*

It is our pleasure to announce the selection of the Chief Residents for academic year 2005-2006: Yates Brown, M.D., Jennifer Osborne, M.D., and Michael Smith, M.D. The entire PGY III class is a talented group, so this was not an easy selection process. Congratulations to the new Chiefs!

### 2005-2006 PGY1 Residents



Dianne Augelli  
University of Oklahoma



Jonathan Bosman  
Michigan State University



Annemarie Casesa  
University of Florida



Andrew Clark  
Drexel University



Nicole Eftychiou  
UMDNJ



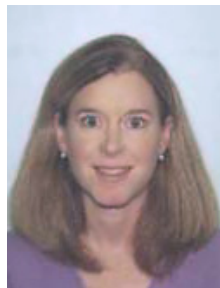
Divya Gounder  
Medical College of Ohio



Tal Herbsman  
University of Florida



Kari Beth Law  
West Virginia University



Tamara Padgett  
MUSC



Rebecca Payne  
University of South Carolina



Heather Shibley  
Pennsylvania State



Nicole Winston  
Texas A&M



Vanessa Spearman  
Medical College of Georgia  
*Medicine/Psychiatry*



Rachel Sowards  
Marshall University  
*Medicine/Psychiatry*

## Residency Recruitment

*Kimberly M. Bush, M.D., PGY2*



In March, I had the opportunity to represent the psychiatry department of the Medical University of South Carolina (MUSC) at the 40<sup>th</sup> Annual Student National Medical Association (SNMA) meeting in St. Louis, Missouri. SNMA is the oldest and largest medical student organization dedicated to increasing the number of culturally competent minority physicians through its support of pre-medical and medical students. For the past few years, the Graduate Medical Education (GME) Office has utilized this conference as an instrument to recruit minority students into MUSC residency positions. This year, the GME office provided support for a record number of residents to attend this conference in efforts to increase diversity on the MUSC campus. There were five residents in attendance that represented the following departments: Obstetrics and Gynecology, Orthopaedic Surgery, Pediatrics, and Psychiatry. As residents, we were thrilled to each have support from our departments in this university-wide effort to actively recruit minority students for residency positions. Although only four departments were represented, we shared information with medical students about all residency programs at the university. My peers and I agreed that we should continue to participate in recruitment efforts. Our obligation to continue recruitment stems from the genuine interest expressed by many of the students that we encountered. We challenge each department to strive towards diversity and to initiate measures that will ensure the Medical University of South Carolina's residency programs are reflective of our state's demographic profile.

## Psychology Interns

*Dean Kilpatrick, Ph.D.*

The Charleston Consortium Clinical Psychology Internship program is pleased to announce that we have successfully recruited another excellent class of interns for the 2005-2006 academic year. Our scientist-practitioner internship involves research as well as supervised clinical practice at a number of practicum sites in the Department, the VA Medical Center, and other Departments at MUSC. Because of its research focus and the outstanding track record of its former interns, the Charleston Consortium attracts a large number of highly qualified applicants from university-based clinical psychology Ph.D. programs throughout the United States and Canada. Next year's class of 15 interns was selected out of 159 applicants.

### 2005-2006 Psychology Interns



Emily Anderson  
Binghamton University- SUNY



Jamie Bodenlos  
Louisiana State University



Cameo Borntreger  
University of Tulsa



Carole Campbell  
St. Louis University



David Creel  
Louisiana State University



Melina Griss  
Indiana University Purdue  
University



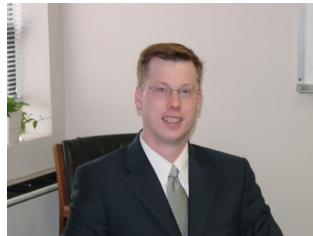
Berglind Gudmundsdottir  
University of Buffalo, SUNY



Greg Hajcak  
University of Delaware



Kristina Hedtke  
Temple University



John Hustad  
Syracuse University



Michael McCart  
University of Wisconsin- Milwaukee



Magdalena Perez  
University of Texas at Austin



Eva Serber  
University of Florida



Susan South  
University of Virginia



Heidi Zinzow  
University of Georgia

## Appointments & Promotions

*Editorial Note: All appointments, new hires, and promotions listed below are for the period starting January 1 through March 31, 2005.*

### Psychiatry Faculty

#### *Appointments*

**M. Foster Olive, Ph.D.** joined the faculty as Assistant Professor. Dr. Olive came to us from the Ernest Gallo Clinic and Research Center, University of California-San Francisco.

### Institute of Psychiatry

#### *New Employees*

- Annelea Dimitriadis, MSW, Behavioral Health Clinic
- Jacqueline McRinna, Administrative Assistant, Administration/Adult Services
- Pamela Caffee, Administrative Assistant, Medical Director's Office
- Effie Hatchett, House Services Coordinator, Staffing Office
- Erica Grate-Simmons, Clinical Nurse Coordinator, 2 North/Youth Services

- Linda Doctor, Human Services Specialist I, Children's Day Treatment Program/Leeds Ave/Youth Services
- Ursula Caton, House Service Coordinator, Staffing Office
- Keia Jenkins, Patient Registrations Representative, Behavioral Health Clinic
- Deborah Gordon, Clinical Nurse Coordinator, 3 North/Adult Services
- Nelsy Evans, Patient Registration Representative, CDAP Outpatient Services
- Jennifer Hearne, Administrative Specialist II, 3 North/Adult Services
- Betty Weidert, Patient Registration Representative, East Cooper Satellite Clinic
- Kendra Scott, Lab Specialist I, IOP Lab
- Damien Millet, Clinical Nurse, 3 North/Adult Services
- Leslie Folson, Clinical Nurse Coordinator, 4 North/CDAP Inpatient Program
- James Jones, Human Services Specialist I (Therapeutic Assistant), 1 North/Adult Services
- Helen (Cathy) Cantey, Referral Coordinator, Admissions Office
- Kristen Burn, Human Services Specialist II (Clinical Counselor), 5 North STAR/Youth Services
- Susan Gilmer, Patient Registration Representation, OP Financial Services
- Gwendolyn Heyward-Parker, Human Services Specialist I (Therapeutic Assistant), 3 North/Adult Services

### *Departures*

- Ursula Malvasio, House Services Coordinator, Staffing Office (Retirement January 2005)
- Frank Bulger, House Services Coordinator, Staffing Office (Retirement March 2005)

## Department of Psychiatry

### *New Employees*

- Kimberley Henderson, Research Grant Human Services Coordinator I in CDAP.
- September "Tami" Welborn, Administrative Coordinator I in CDAP.
- Michael Hartzog, Information Resource Consultant II in Clinical Neurosciences.

### *Promotions*

- Steven Guterman accepted the position of Program Assistant on January 18th in CDAP.

## Conferences & Educational Opportunities

### Psychiatry Grand Rounds

The following speakers participated in the 2004-2005 Grand Rounds Series from April 1 – June 4, 2005. Previous lectures were included in the January 2005 issue of the Psychiatry Newsletter. The 2005-2006 schedule will be posted online at [www.musc.edu/psychiatry/grand\\_rd.htm](http://www.musc.edu/psychiatry/grand_rd.htm).

- |          |  |
|----------|--|
| April 1  | <b>Stuart C. Yudofsky, M.D., D.C.</b> and Irene Ellwood Professor and Chairman, Menninger Department of Psychiatry and Behavioral Sciences, Baylor College of Medicine. Title: <b>Assessment and Psychopharmacological Treatment of Patients with Agitation and Aggression</b>   |
| April 8  | <b>Robin M. Murray, M.D., FRCPsych</b> , Professor of Psychiatry, Institute of Psychiatry (London, UK). Title: <b>The Inadequacy of the American Concept of Schizophrenia</b>  |
| April 15 | <b>Sandro Galea, M.D., M.P.H., Dr.P.H.</b> , Medical Epidemiologist and Associate Director, Center for Urban Epidemiologic Studies, New York Academy of Medicine. Title: <b>Long-Term Mental Health Consequences of Terrorism in the General Population: Examples from Research after September 11 Terrorist Attacks in New York City and the March 11 Terrorist Attacks in Madrid</b> |

- April 22 **May L. Wykle, Ph.D., R.N.**, Dean and Cellar Professor, Frances Payne Bolton School of Nursing, Case Western Reserve University. Title: **Vulnerable Populations: The Impact of Mental Health and Self Care on Older Adults.**
- May 6 **Charles F. Reynolds III, M.D.**, Professor of Psychiatry, Neurology, and Neuroscience, and Senior Associate Dean, University of Pittsburgh School of Medicine. Title: **Maintenance Treatment of Major Depression: What Does the Evidence Tell Us about Psychotherapy and Pharmacotherapy**
- May 13 **John M. Kane, M.D.**, Professor, Department of Psychiatry, The Zucker Hillside Hospital, Long Island Jewish Medical Center. Title: **Pharmacologic Treatment of Schizophrenia: How Far Have We Come?**
- May 20 **Dace S. Svikis, Ph.D.**, Professor, Departments of Psychology, Obstetrics/Gynecology and Psychiatry, Virginia Commonwealth University, Medical College of Virginia. Title: **Perinatal Addiction**
- May 27 **Harold A. Sackeim, Ph.D.**, Chief, Department of Biological Psychiatry, New York State Psychiatric Institute, Professor, Departments of Psychiatry and Radiology, College of Physicians and Surgeons of Columbia University. Title: **Focal Brain Stimulation in Psychiatry**
- June 3 **Charles Nemeroff, M.D.**, Professor and Chairman, Department of Psychiatry, Emory University School of Medicine. Title: **The Neurobiology of Early Life Trauma: Implications for the Pathophysiology of Mood and Anxiety Disorders.** This Special Grand Rounds will be a part of the 2005 Update in Psychiatry Conference.

## 2005 Update in Psychiatry “Psychoendocrinology”

Friday, June 3 & Saturday, June 4

This year’s Update in Psychiatry was well attended and included highly informative presentations from the speakers listed below. For those unable to attend, DVDs or tapes of the presentations may be checked out from the Chairman’s Office, for viewing and return. For additional information, please contact Liz Bednarowicz at [bednaro@musc.edu](mailto:bednaro@musc.edu).

### **James L. Levenson, M.D.**

Professor of Psychiatry, Medicine, and Surgery  
Virginia Commonwealth University  
*“Psychosomatic Aspects of Endocrinology”*

### **Charles B. Nemeroff, M.D., Ph.D.**

Professor and Chairman of Psychiatry  
Emory University School of Medicine  
*“HPA Axis and the Pathophysiology of Depression: The Role of Early Adverse Experience”*

### **John W. Newcomer, M.D.**

Associate Professor of Psychiatry  
Washington University School of Medicine  
*“Mental Disorders, Metabolic Disturbance, and Cardiovascular Risk”*

### **John M. Oldham, M.D.**

Professor and Chairman of Psychiatry  
Executive Director, Institute of Psychiatry  
Medical University of South Carolina  
*“Bidirectional Brain/Body Interaction”*

### **Murray A. Raskind, M.D.**

Professor of Psychiatry and Behavioral Sciences  
University of Washington School of Medicine  
*“Stress Hormone Systems in Alzheimer’s Disease: Therapeutic Implications”*

### **Alan F. Schatzberg, M.D.**

Kenneth T. Norris, Jr. Professor and Chairman  
Department of Psychiatry and Behavioral Sciences  
Stanford University School of Medicine  
*“Cortisol, Cognition, Psychotic Major Depression, and Glucocorticoid Antagonists”*

### **Eve G. Spratt, M.D.**

Associate Professor of Psychiatry  
Medical University of South Carolina  
*“Neuroendocrinologic Findings Associated with Child Abuse and Neglect”*

### **Kimberly A. Yonkers, M.D.**

Associate Professor of Psychiatry  
Yale University School of Medicine  
*“Perinatal Depression: When Is It More Than Just the Blues”*

## Forensic Day of Discovery

On May 12, the Office of Community & Professional Education (CPE) and the division of Forensic Psychiatry sponsored "Day of Discovery: Forensic Psychiatry." The goal of the conference was to introduce psychiatry's forensic services to the legal community and to initiate a relationship with the new Charleston School of Law. The conference was a success and was attended by a sold out crowd of 164. Every seat in the auditorium was filled. The majority of the attendees were physicians, judges and attorneys.

Conference faculty and topics included "Personality Disorders in Forensic Psychiatry" presented by Dr. John Oldham; "Psychiatry and the Death Penalty" presented by Dr. Margaret Melikian & Teresa Norris, J.D., Director, Center for Capital Litigation; "Malingering Mental Illness: How to Catch a Fake" presented by Dr. Thomas Cobb; "Criminal Responsibility and Legal Insanity" presented by Dr. Richard Frierson, Director, USC Forensic Psychiatry Fellowship; "The Relationship of Probate Law to Forensic Psychiatry" presented by Richard Gershon, J.D., Dean and Professor of Law, Charleston School of Law; and "Use of Psychological Tests in Forensics Evaluations" present by Dr. Randolph Waid.

Several of the attendees noted on their evaluations that this was the best Day of Discovery conference ever offered. Several also requested that we offer the conference again and expand it to two days.

## Professional Awards & Association Appointments

### **Raymond F. Anton, M.D.**

Invited to be on an Extramural Advisory Board to evaluate the NIAAA treatment research portfolio.

### **Jeffrey J. Borckardt, Ph.D.**

Member, International Association for the Study of Pain

### **Timothy Brewerton, M.D.**

Appointed as delegate to the Assembly of the American Academy of Child and Adolescent Psychiatry for a 3-year term.  
Appointed to Editorial Board of Current Nutrition and Food Science

### **Carla Danielson**

College on Problems of Drug Dependence Early Career Investigator Award



### **Michael de Arellano, Ph.D.**

Recognized for his tireless efforts in the areas of multi-cultural issues and mental health services for all Lowcountry individuals, Michael de Arellano, Ph.D., of the Department of Psychiatry and Behavioral Health, was named the 2005 recipient of the Earl B. Higgins

Achievement in Diversity Award

### **Lindsay DeVane, Pharm.D.**

Appointed to the Editorial Board of *Current Clinical Pharmacology*

### **Paul Gold**

Executive Committee of the Faculty Senate, representing the College of Medicine-Clinical Sciences (COM-CS).

### **Dean Kilpatrick, Ph.D.**

Served as one of five judges for the Dart Award for Excellence in Reporting on Victims of Violence. The Dart Center for Journalism and Trauma is affiliated with the University of Washington and provides a \$10,000 prize for the entry that best portrays victims and their experiences with accuracy, insight, and respect. Kilpatrick was selected as a judge on the basis of his office as President-Elect of the International Society of Traumatic Stress Studies.

### **John Magill, M.S.W.**

2005 Merit Award, South Carolina Hospital Association

### **Patrick O'Neil, Ph.D.**

Chair of the Education Committee, North American Association for the Study of Obesity.

**John M. Oldham, M.D.**

Chair, Editor Search Committee, American Journal of Psychiatry  
Distinguished Life Fellow, American Psychiatric Association  
Member, Benjamin Rush Society  
Member, Board of Directors, American Psychiatric Publishing, Inc.

Technical Advisory Panel for Depression/Behavioral Health, National Quality Forum Standardizing Ambulatory Care Performance Measures  
Technical Expert Panel, Joint Commission on Accreditation of Healthcare Organizations

**Gail Stuart**

2005 Palmetto Gold Award for Nursing Excellence

## Publications

For the second issue of the PN, we list below all peer-reviewed publications that have been published between January 1 and March 31, 2005. The list shown is in alphabetical order by the first author's last name, and psychiatry faculty are indicated in bold.

- 1) Bender DS, **Oldham JM**: Psychotherapies for borderline personality disorders. In: JG Gunderson, PD Hoffman (eds) *Understanding and Treating Borderline Personality Disorder: A Guide for Professionals and Families*. Arlington, VA: American Psychiatric Publishing, Inc., 2005.
- 2) **Borckardt JJ**, Nash MR, **Hardesty S**, **Herbert J**, **Cooney H**, **Pelic C**: An empirical evaluation of Tukey's control chart for use in health care and quality management applications. *Quality Management in Healthcare* 14(2), 112-115, 2005.
- 3) **Borckardt JJ**, **Kozel FA**, **Anderson B**, Walker A, **George MS**: Vagus nerve stimulation affects pain perception in depressed adults. *Pain Research and Management* 10(1), 9-15, 2005.
- 4) **Brady KT**, **Sonne S**, **Anton RF**, **Randall CL**, **Back SE**, Simpson K: Sertraline in the Treatment of Co-occurring Alcohol Dependence and PTSD. *Alcoholism: Clinical and Experimental Research* 29(3), 395-401, 2005.
- 5) **Brewerton TD**: Psychological Trauma and Eating Disorders. *Eating Disorders Review*, Part 1, 1:137-154, 2005.
- 6) Coffey SF, Schumacher JA, Brimo ML, **Brady KT**: Exposure therapy for substance abusers with PTSD: Translating research to practice. *Behavior Modification* 29:10-38, 2005.
- 7) **Danielson CK**, **de Arellano MA**, **Kilpatrick DG**, **Saunders B**, **Resnick H**: Child maltreatment in depressed youth: Differences in symptomatology based on history of abuse. *Child Maltreatment* 10:37-48, 2005.
- 8) **de Arellano MA**, **Waldrop AE**, Deblinger E, Cohen JA, **Danielson CK**, Mannarino AR: Community outreach program for child victims of traumatic events: A community-based project for underserved populations. *Behavior Modification* 29:130-155, 2005.
- 9) **Ham LS**, **Carrigan MH**, **Moak DH**, **Randall CL**: Social Anxiety and specificity of positive alcohol expectancies: Preliminary findings. *Journal of Psychopathology and Behavioral Assessment* 27(2):115-121, 2005.
- 10) **Mu Q**, **Nahas Z**, Johnson KA, Yamanaka K, **Mishory A**, **Koola J**, Hill S, **Horner MD**, Bohning DE, **George MS**: Decreased cortical response to verbal working memory following sleep deprivation. *Sleep* 28:55-67, 2005.
- 11) **Oldham JM**: Guideline Watch: Practice Guideline for the Treatment of Patients with Borderline Personality Disorder. Arlington, VA: American Psychiatric Association, 2005.
- 12) **Oldham JM**: Treatment-Treatment Interactions. *Journal of Psychiatric Practice* 11(1):1, 2005.

- 13) **Oldham JM**: Time, Numbers, and Patient Care. *Journal of Psychiatric Practice* 11(2):71, 2005.
- 14) **Oldham JM**, Skodol AE, Bender DS (eds): *Textbook of Personality Disorders*. American Psychiatric Publishing, Inc., 2005.
- 15) Nguyen SA, DeLeon CP, **Malcolm RJ**, **Middaugh LD**: Tiagabine reduces ethanol reward in C57BL/6 mice under acute and chronic administration regimens. *Synapse* 56:135-146, 2005.
- 16) **Stuart G**: *Psychiatric Nursing*, Sixth Edition. St. Louis, Missouri: Mosby-Year Books, 2005.
- 17) **Stuart G**, Laraia M: *Principles and Practice of Psychiatric Nursing*, Eight Edition. St. Louis, Missouri: Mosby-Year Book, 2005.
- 18) **Turner SM**, **Frueth BC**, **Beidel DC**: Multicomponent behavioral treatment for chronic combat-related posttraumatic stress disorder: Trauma Management Therapy. *Behavior Modification* 29:39-69, 2005.

## Presentations

*January 1 – March 31, 2005*

- 1) **Brady K**: Alcohol Withdrawal and Alcohol Relapse Prevention: Implications for Clinical Practice, Charleston, SC
- 2) **Brady K**: Alcohol Abuse and Dependence: Etiology and Current Treatment, Atlanta, GA
- 3) **Brady K**: The Relationship between Alcohol Abuse, Depression and Anxiety, Cardinal Health for Wyeth/Effexor XR Interactive DVD Series, Charleston, SC
- 4) **Brady K**: Stress and Substance Use Disorders, Emory University School of Medicine Grand Rounds, Atlanta, GA
- 5) **Brady K**: Stress and Relapse to Substance Use, University of Alabama at Birmingham Grand Rounds, Birmingham, AL
- 6) **Brady K**: Etiology of Alcohol Abuse and Dependence: What Happens in the Brain? New York, NY
- 7) **Brewerton T**: Invited Speaker, "The Role of Psychopharmacology in the Treatment of Eating Disorders, CME, Inc. Clearwater, FL.
- 8) **Danielson CK**, Ehrenreich J, Suarez L: *Selection of Empirically Based Interventions for High Risk Behaviors in Traumatized Adolescents*. Workshop presented at the National Child Traumatic Stress Network All Network Meeting, Alexandria, VA.
- 9) **de Arellano MA**, **Danielson CK**: *Home-Based Trauma-Focused Cognitive-Behavioral Therapy*. Workshop presented at the National Child Traumatic Stress Network All Network Meeting, Alexandria, VA.
- 10) Fortson BL, **Saunders BE**, Williams LM, **Hanson RF**: Relations Among Family Environment, Violence Exposure, and Child Outcome: Findings from the Navy Family Study. Paper presented at the San Diego Conference on Child Maltreatment, San Diego, CA.
- 11) **Gray K**: Adolescent Substance Abuse: An Update on Trends, Screening, and Diagnosis. Grand Rounds, Tulane University Department of Psychiatry, Division of Child and Adolescent Psychiatry.

- 12) Tweedy K, **Horner MD**, Holbrook L: Use of the California Verbal Learning Test Second Edition (CVLT-II) Forced Choice Recognition Subtest in detecting suboptimal effort on neuropsychological evaluation. Poster session presented at the 33rd annual meeting of the International Neuropsychological Society, St. Louis, MO.
- 13) **Grubaugh AL, Magruder KM, Waldrop AE, Elhai JD, Knapp RG, Frueh BC**: Subthreshold PTSD in primary care: Prevalence, psychiatric disorders, healthcare use, and functional status. Poster presented at the Mid-Winter Meeting of the Society for Personality Assessment, Chicago, IL.
- 14) **Hanson RF, Saunders BE**: Trauma-Focused Cognitive Behavioral Therapy. Presentation at the annual colloquium for the South Carolina Professional Colloquium on Child Abuse, Charleston, SC.
- 15) **Hanson RF**, Fricker-Elhai A, **Self-Brown S, Kilpatrick DG, Saunders BE, Resnick HR**: Relations among Family Environment, Violence Exposure and Mental Health Outcomes: Findings from the National Survey of Adolescents. Paper presented at the San Diego Conference on Child Maltreatment, San Diego, CA.
- 16) **LaRowe S, Upadhyaya HP, Saladin M, Carpenter M, Brady KT**: Gender differences and cue-reactivity to in vivo smoking and stress cues in nicotine dependent smokers, Society for research on Nicotine and Tobacco annual meeting, Prague, Czech Republic.
- 17) **Mack A**: Adolescent Substance Abuse, Charleston Women's Bar Association, Charleston, SC
- 18) **Magruder KM, Frueh BC, Knapp RG**, Davis L, **Hamner MB**, Hebert-Martin R, **Gold PB, Arana GW**: Do primary care patients with post traumatic stress disorder use more health services? Presented at the 7th Workshop on Costs and Assessment in Psychiatry--Financing Mental and Addictive Disorders, International Center of Mental Health Policy and Economics, Venice, Italy.
- 19) **Self-Brown S, Saunders BE**, Williams LM, **Hanson RF**: Effects of Community Violence Exposure and Parental Psychopathology on the Psychological Outcome of Children in the Navy Family Study (NFS). Paper presented at the San Diego Conference on Child Maltreatment, San Diego, CA.
- 20) Tweedy K, **Horner MD**, Holbrook L: Use of the California Verbal Learning Test Second Edition (CVLT-II) Forced Choice Recognition subtest in detecting suboptimal effort on neuropsychological evaluation. Presented at the annual North American meeting of the International Neuropsychological Society, St. Louis, MO.
- 21) **Upadhyaya H**: Management of adolescent substance abuse: focus on nicotine dependence, Department of Pediatrics, Medical University of South Carolina, Charleston, SC.
- 22) **Upadhyaya H**, Rose K, Wang W, O'Rourke Sullivan B, **Deas D, Brady KT**: Treatment of comorbid ADHD and nicotine dependence, Society for research on Nicotine and Tobacco annual meeting, Prague, Czech Republic.

## Announcements

Beginning May 17, 2005 the Weight Management Center will be offering the FOCUS & First Step weight loss program at our new satellite office on Daniel Island (899 Island Park Drive).

The FOCUS program is a 15-week intensive lifestyle change program designed to induce larger initial weight losses than traditional lifestyle change programs. Patients attend brief weekly individual appointments that rotate among clinic sub-specialties (behavioral, dietitian, and exercise physiology). The early part of the program is primarily supplement-based and provides highly structured dietary intervention. During the latter part of the program, a shift toward more moderate weight loss is made. The program also stresses the importance of an active lifestyle.

First Step is a 20-week program that offers weight loss assistance through individual weekly meetings. It is appropriate for people of all weight ranges. The program helps patients to make changes in eating practices, behaviors, and activity level related to weight control. Individual meal plans and exercise plans are included at the out-set. First Step promotes a gradual yet significant weight loss.

To learn more, call the MUSC Weight Management Center at 792-2273 (792-CARE).

Can't make it to Daniel Island? The FOCUS & First Step programs are also offered at the Canters main office downtown on the MUSC campus along with the Healthfast program and other services.

## Newsletter Submissions

The Psychiatry Newsletter is published four times each year in the last week of the months of January, April, July, and October. Please submit all announcements for the Psychiatry Newsletter electronically by the 15<sup>th</sup> of the month of publication to Liz Bednarowicz, Editorial Assistant, Office of the Chairman, 792-0028 or [bednaro@musc.edu](mailto:bednaro@musc.edu).