

# PSYCHIATRY NEWSLETTER

Department of Psychiatry and Behavioral Sciences & Institute of Psychiatry  
Medical University of South Carolina Vol. 4, October 2005/January 2006



## Message from the Chairman

*John M. Oldham, M.D.*

The first half of the fiscal/academic year 2005-2006 has been a busy and productive period for the Department. As outlined by Lindsay DeVane and Jennifer Shambrook, research grant activity in psychiatry has increased, even as the NIH budget has become significantly constrained. Special mention should be made of

the selection by the Dean of Kathleen Brady to assume the directorship of the General Clinical Research Center (GCRC) of the University. Not only will Kathleen continue her many responsibilities as director of the Clinical Neurosciences Division of the Department as she spearheads the renewal application for federal funding for the GCRC, she will also lead the application for a planning grant, to position us to apply for a new NIH translational research program, the Clinical and Translational Science Awards (CTSA).

A recent highlight in the Department has been the establishment of a new position of Psychiatry Development Officer, to launch a major fund-raising program in psychiatry, as part of the University Office of Development. We were extremely fortunate to recruit Vanessa Hill to this post, who has taken on her new role with energy and enthusiasm. Vanessa came to us after a very successful period working in the transplant service, where she coordinated their development and public relations efforts. She may be known to many of you for her widely-admired talents during her many years as anchor on ABC 4 Charleston evening news.

In this issue of the Newsletter, we introduce a "Special Features" section. Ziad Nahas describes an outstanding new Mood Disorders Program, building on the groundbreaking research pioneered by Mark George and colleagues in the Brain Stimulation Laboratory. Also, Dean Kilpatrick describes the substantial response by NCVF faculty to victims of Hurricanes Katrina and Rita, extending the expertise of these experts in disaster psychiatry to our neighbors in need.

On the education front, I am delighted to congratulate Markus Kruesi and Himanshu Upadhyaya and many collaborating faculty, staff, and trainees, on the successful five-year re-accreditation of the child and adolescent psychiatry residency program and the addiction psychiatry residency program. In addition, as Darlene Shaw describes in the pages that follow, a new 6-week third-year medical student clerkship will be launched next July, creating a much improved timeframe for students to learn clinical psychiatry.

Finally, the last few months have reflected great progress in updating and improving the website of the Department. A new format has been developed, and a new homepage is linked to updated content on educational and research pages. Links to the research divisions are easy to navigate, and a new faculty page contains photos, brief biosketches, and attached CVs for faculty members. Links to the MUSCHealth.com website of the hospital connect the Department activities to the clinical programs of the Institute. Much of this progress has been accomplished by our new Website Coordinator, Kat Giarla, who is doing a terrific job. Additional information about the new psychiatry website is provided on page 21.



*Brady*



*Hill*



## Message from the Administrator

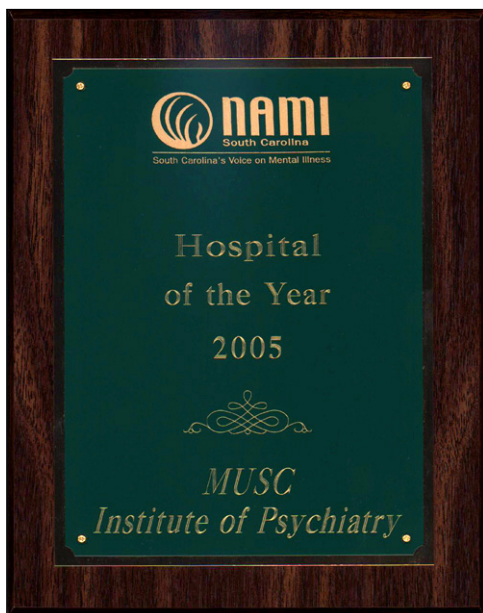
*Joan Herbert, M.S., R.N.*

The last six months of 2005 were active and exciting for the Institute of Psychiatry. We welcomed two new Managers. Meredith Lyons-Crews, LISW accepted the position of Manager of Children's Day Treatment Services. Meredith had been the Program Coordinator for one of our programs and has been able to move into her expanded role as Manager for all of the programs rapidly and effectively. Michael Hartley, MSN relocated from Massachusetts and assumed the responsibilities as Manager for the Acute Care Unit and the Behavioral Intensive Care Unit on the first floor of the Institute. Michael has been orienting to his units, the IOP and

MUSC and has quickly become an active member of the Institute's leadership team. Please join me in welcoming Meredith and Michael and providing your support in their new roles.

We also had the pleasure this Fall of celebrating the selection of the Institute of Psychiatry as the 2005 Hospital of the Year by the South Carolina Chapter of the National Alliance on Mental Illness. The Institute was specifically recognized for our support of patient and family education and support activities and our commitment to provider education as a means to raise the level of sensitivity to the experiences of patients and their families. The Executive Director of the state chapter, Dave Almeida, and the President of the local chapter, Beth Tufts, were among those who joined us to celebrate this award and to recognize all of the IOP staff who made it possible.

The first employee satisfaction survey in several years was completed in late Summer. More than 65% of those who work in the Institute of Psychiatry took the time to share their opinions. The results demonstrate both strengths and opportunities for improvement in our organization. For example, over 75% of respondents indicated that they believe that their work has purpose and makes a difference in people's lives and that they can trust their supervisor to conduct himself/ herself with integrity. On the other hand, most respondents reported perceptions that there is a lack of opportunity for advancement and inadequate recognition and reward for performance. Meetings were held with staff from twenty-four (24) work groups to discuss the survey results and generate ideas for action. Altogether the work groups identified nine (9) areas to focus on for improvement and one hundred eleven (111) action items. Work on these actions is scheduled for the first quarter of 2006. I would like to thank everyone who provided their input during the survey process and in the action planning meetings. I am excited about the potential positive impact on the work environment of the IOP this coming year!



*Presenting the award is J. David Almeida, center, and from left to right are: Stuart Smith, Beth Tufts, Joan Herbert, and John Oldham.*

### The Mood Disorders Program

Director: Ziad Nahas, M.D., Associate Professor of Psychiatry



Depression often strikes during the prime of life and is estimated to impact 12% of all men, and 20% of women at some point during their lives. The World Health Organization currently ranks depression as one of the most disabling disease in the world. The devastating consequences of under treated depression include: difficulty in the workplace, absenteeism, problems with relationships, marital and family discord. These statistics also apply to South Carolina where the Medical University of South Carolina serves a major role in tertiary referrals taking advantage of its local expert faculty members.

The Medical University of South Carolina Mood Disorders Program is an exciting new addition to the Department of Psychiatry and Behavioral Sciences. It is part of the Specialty Division and the Brain Stimulation Laboratory (BSL) directed by Dr. Mark S. George. It aims at becoming a model for translational research and a tangible liaison between the Neuroscience Institute, the Institute of Psychiatry with its research and clinical divisions, the Radiology Department and the Biometry Department. The program's goal is to research, develop and ultimately provide cutting edge therapies for depression and other mood disorders. By doing so, it will greatly enhance the visibility of this institution and provide much needed resources to local communities and individual health providers. It will also serve as a concrete opportunity to foster the dialogue between basic and clinical research on campus.

The MDP has 3 facets: A basic sciences bench, a clinical research laboratory and a clinical delivery component.

1. *Basic Affective Neurosciences*: This effort calls for an open dialogue between basic and clinical research to refine the scientific questions and push for a more integrated and comprehensive approach to treating depression. The program is structured around an NIMH Awarded grant (PI: Nahas) to investigate Deep Brain Stimulation (DBS) and its potential therapeutic effects in animal models of depression while beginning to explore clinical investigative research in affected populations. DBS is currently approved for the treatment of Parkinson's Disease and other neurological disorders. To insure outstanding results, this research draws on local (Drs Peter Kalivas, Jackie McGinty, Steve Takacs and Lindsay DeVane) and national collaborations with experts in mood disorders and affective neurosciences research. It also includes a unique collaboration with SUNY Brooklyn Downstate Medical Center's non-human primate laboratory where DBS will be tested in bonnet macaque monkeys.
2. *Clinical Research*: The MDP is an extension of the BSL that focuses on mood disorders related studies. It continues with the legacy of pioneering brain stimulation technologies as investigative tools for neuropsychiatric therapeutic application. The BSL was instrumental in getting Vagus Nerve Stimulation (VNS) approved by the US FDA as a new somatic treatment for depression and is currently playing a key role in a similar plan to investigate Transcranial Magnetic Stimulation (TMS) and its clinical relevance in treating depression. The MDP is likely to play another pivotal role in a number of new initiatives and national collaborative studies. One of such projects, still in the planning phase, is as a multicenter study for DBS in Depression. The clinical research component continues to take advantage of a strong collaboration that already exists the BSL and the Center for Advanced Imaging Research (CAIR).
3. *Mood Disorders Clinic (MDC)*: Management of patients with treatment-resistant mood disorder patients requires a proactive attitude from both the treating physician and the patient. The mission of the Mood Disorders Clinic is to disseminate and advance state-of-the-art science and treatment for clinical depression. It is directed by Dr. Nahas. The 2 main therapeutic modalities currently in place are Electroconvulsive Therapy (ECT) under the leadership of Dr. Jack Foust and the recently FDA approved VNS Therapy for depression, led by Drs Nahas and George. The Clinic takes advantage of a common administrative and clinical structural to facilitate complementary treatments between these 2 modalities when indicated. The Clinic is coordinated by Carol Burns, RN. The MDC provides comprehensive evaluations and treatments of individuals with treatment resistant depression. Consultations are available for both inpatients (ECT) and outpatients (ECT and VNS Therapy).

Upon referral from a health care provider, individuals receive a thorough psychiatric and medical evaluation, to determine if they are appropriate for any of these 2 treatment regimens. The collaboration among patient, family, referring physician and the Clinic's health care providers is key. With VNS Therapy, since it is a long-term treatment, the Clinic monitors the device over time and provides feedback to the primary physician. When needed, it can also provide additional input for optimal clinical management. The close relationship with the BSL also provides patients and their primary providers with an opportunity to keep up with the latest research with other brain stimulation modalities and pharmacological therapies that may be needed for these patients' well being. It is anticipated that sometimes in the next year, TMS will also become an available clinical tool.

## **NCVC Faculty Respond to Hurricanes Katrina and Rita**

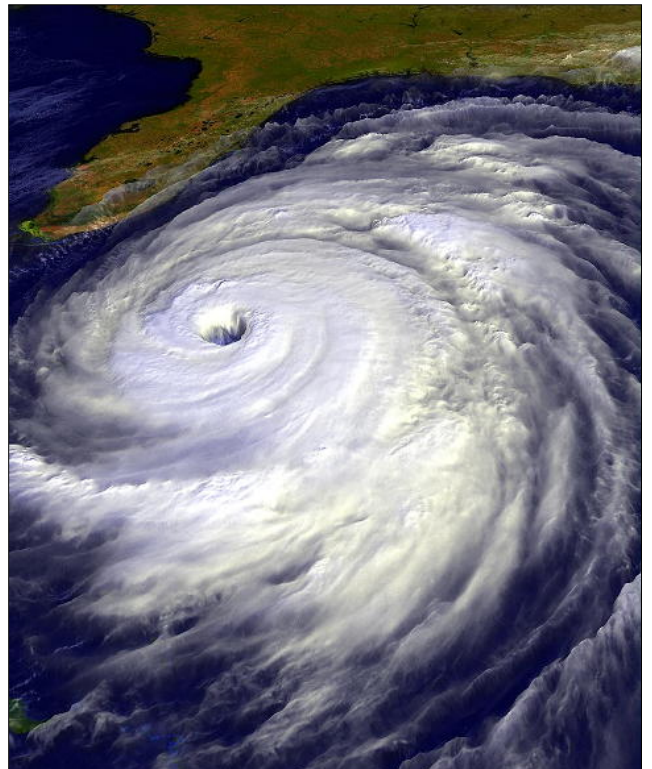
*Contributor: Dean Kilpatrick, Ph.D.*

The NCVC is primarily known for its work with crime victims, but it also has considerable expertise in the area of terrorism and other large scale disasters. When Hurricanes Katrina and Rita devastated widespread regions of coastal Louisiana, Mississippi, and Texas, the NCVC responded by providing several types of assistance to those who were responding to the disaster and its aftermath.

First, several NCVC faculty provided specialized mental health training in disaster response to mental health professionals and policy makers in Louisiana and Mississippi. In October, Dr. Michael de Arellano conducted a workshop in Mississippi on the effects of Hurricane Katrina on children with a particular emphasis on underserved minorities. This workshop was sponsored by the National Child Trauma Network and Catholic Charities. In November, Dr. Connie Best presented a workshop and consultation to psychologists, psychiatrists, and social workers in New Orleans at the invitation of the New Orleans Human Services Authority. Her workshop focused on addressing the mental health needs of disaster victims as well as self care for mental health professionals, many of whom are themselves disaster victims. On December 1, Dr. Dean Kilpatrick participated in a day long workshop sponsored by the LSU School of Social Work and the Baton Rouge Area Foundation. The workshop was attended by over 600 participants who were mental health professionals, administrators, educators, and policy makers. Kilpatrick's presentation focused on addressing disaster-related substance use/abuse issues.

Second, through its NIMH-funded Disaster Research and Mentoring Center, several NCVC faculty provided consultation and technical assistance to clinical researchers interested in doing disaster research in the affected areas. In particular, Drs Ron Acierno, Heidi Resnick, and Ken Ruggiero assisted researchers at LSU and the University of Mississippi Medical Center prepare grant applications submitted to NIMH and NIDA.

Third, NCVC faculty provided clinical, research, and policy consultations to numerous individuals and organizations about disaster response. These included the National Child Trauma Network, the Association of Behavior and Cognitive Therapy, the International Society of Traumatic Stress Studies, and the Interagency Standing Committee Task Force on Mental Health and Psychosocial Support in Emergency Settings. The latter organization consists of representatives from the UN and World Health Organizations, and Dr. Kilpatrick attended a meeting of the Task Force in New York City that was reviewing a set of guidelines designed to improve mental health response to disasters by infusing use of effective psychological, proactive mental health principals in all aspects of disaster response.



# Research Update

*Lindsay DeVane, Pharm.D.*  
*Jennifer Shambrook, M.H.A.*

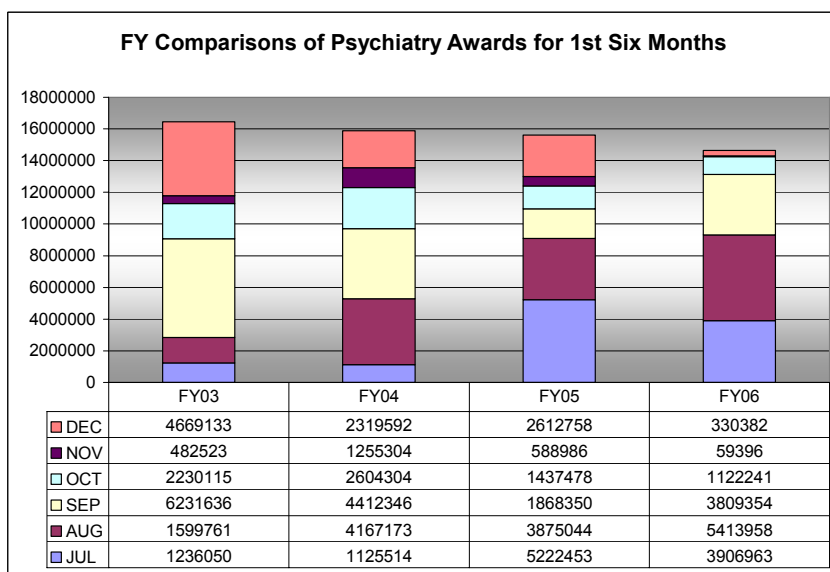
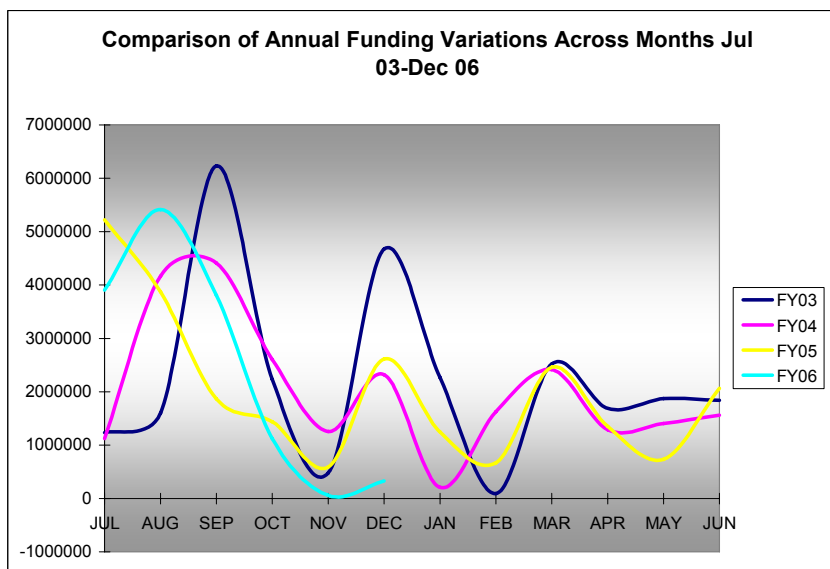
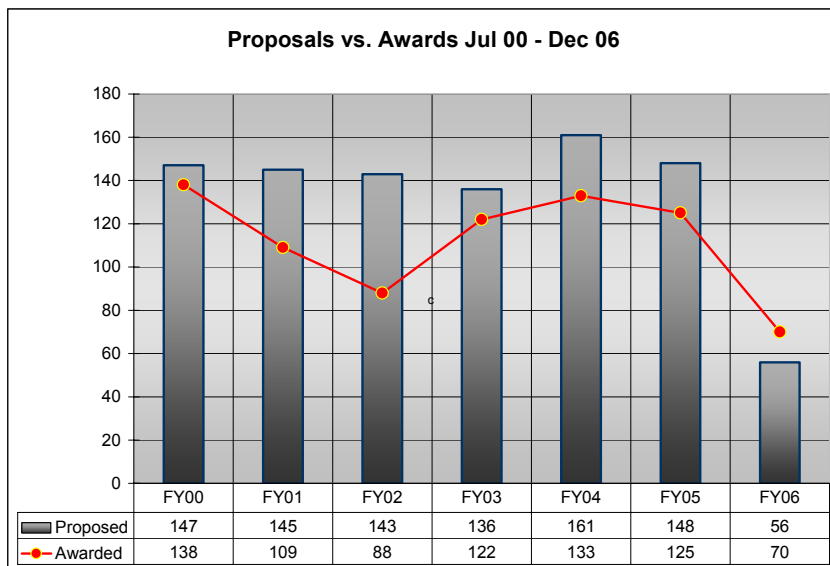
We closed FY05 with a total of 125 awards and \$24,122,035 in total sponsored program funding. During the first half of FY06 we have received 70 awards for a cumulative FY06 total of \$14,642,294. Thus, at the midpoint of the fiscal year, we have received 56% of the total awards received last year and 61% of the total funding received in FY05. (figs. 1&2)

As indicated in fig. 3, we customarily see a three peak pattern of awards during the fiscal year. Due to the continuing resolution status of the federal budget, NIH did not release awards during the months of November and December 05. Of course, as they are our largest funding source, this had a negative impact on our anticipated number of awards and dollars awarded during the first half of the fiscal year. We are beginning to see awards trickle in and expect to see the second peak of our award pattern in January and February as NIH catches up on their notices of grant award to us.

Despite the lag in notices, however, we still have better than half of our awards and funding dollars at the end of the first half of the year.

We submitted 148 proposals during FY05 and have submitted 56 during the first half of FY06. This puts us at about 38% of our proposal activity for last year at the midpoint of this year. This is most likely due to only one major NIH submission deadline being in the first half of the year and two major deadlines being in the second half.

A Research Task Force completed its work in October 2005 to develop a five year strategic plan for research. The strategy outlined in this plan was developed to ensure an infrastructure and cultural environment that will enable the Department to achieve several research objectives. These objectives include building upon our current strengths, establishing new initiatives that will provide a comprehensive base of research resources, and maintaining a



visibility of high quality, innovative research. The Task Force has been replaced by a Strategic Plan Implementation Group that will meet on a regular basis to develop and implement action plans and monitor progress toward achieving the department's research vision.

The Grant Writing and Review Seminar Series is in its second academic year. Chris Frueh, Ph.D., Co-Director of the Division of Public Psychiatry, has taken on a leadership role in this program. The Research Task Force Implementation Group is working as a steering committee for the series. The seminar is open to all young investigators interested in improving the strength of their proposals through a series of workshops (1<sup>st</sup> Monday of each month) and in-house grant reviews (3<sup>rd</sup> Monday of each month). The group meets in the Weight Management Day Room at noon for one hour for each of the sessions.

Faculty participating as instructors or expert reviewers in this activity receive teaching credit for this activity. Those interested in attending, presenting, or having a grant reviewed should contact either Jennifer Shambrook ([morganjf@musc.edu](mailto:morganjf@musc.edu)) or Carla Danielson, Ph.D. ([danielso@musc.edu](mailto:danielso@musc.edu)).

## Educational Programs

### Medical Student Education

*Darlene Shaw, Ph.D.*

#### National Board Results and Feedback from Students

The National Board of Medical Examiners recently released the results of the United States Medical Licensing Exam (USMLE) Step 2 Clinical Knowledge Test for MUSC students who sat for the exam during the academic year July 2004 – June 2005. Students take this exam during their fourth year of medical school. We are gratified that MUSC students' average scores on the Psychiatry/Mental Disorders content areas of the exam were among their very highest scores.

In a similar vein, the College of Medicine recently conducted an End-of-Third-Year Curriculum Survey, which required current fourth-year students to rate their third-year clerkships on 7 items. The response rate to the survey was excellent (N=134), and the students rated the Psychiatry clerkship second highest in the school, topped only by the Family Medicine/Rural Medicine clerkship. These results and the USMLE Step 2 results reflect positively on the Psychiatry curriculum, and we thank our dedicated faculty who make these results possible.

#### Recent Changes in 3<sup>rd</sup> Year Clerkship

Based upon recent discussions of the Medical Student Education Committee (MSEC) and feedback sessions held with students at the end of each clerkship, we have reinstated in the third-year clerkship a Peer Teaching Experience, which requires each student to spend at least 4 hours with one of his/her peers on another inpatient unit where they interview patients and learn about psychiatric disorders which are not seen in the patient population on the unit where the student is typically based. Feedback from students indicates that they value this experience because it provides exposure to a wider range of psychiatric diagnoses. We have also recently initiated in the third-year clerkship a requirement that students submit to their attending physician a formal psychiatric write-up, including a differential diagnosis, plan, and rationale for the primary diagnosis and treatment plan. Students are required to pass the formal write-up to complete the rotation.

We have recently adopted the E-Value system, which allows on-line submission of attendings' evaluations of students and students' evaluations of the course and attendings' effectiveness. Students also use the E-Value system to track their exposure to required diagnostic groups and their self-identified mastery of specific learning objectives and procedures. We are looking forward to the E-Value system streamlining the evaluation process and providing valuable information to track course effectiveness.

## **Future Innovations in the 3<sup>rd</sup> Year Clerkship**

In December 2005, the College of Medicine adopted a revised curriculum for 3<sup>rd</sup> year students. Beginning in July 2006, the Psychiatry Clerkship will be increased from a 4-week experience to a 6-week rotation under the new leadership of Dr. Chris Pelic. All of the other required core rotations (Medicine, Surgery, Ob-Gyn, Pediatrics, and Family/Rural Medicine) will also be 6 weeks in length, and students will choose four 3-week elective experiences. Two of the electives will occur in departments that have core rotations, and two electives will occur in departments with no core rotations (e.g., Ophthalmology, Pathology, Radiology, etc.). Students' performance on the 6-week core rotations will be graded on a 4.0 scale, and the selective experiences will be graded on a Pass/Fail/Honors system.

The Department of Psychiatry has long been working toward establishing a 6-week 3<sup>rd</sup> year clerkship, and we are excited about the opportunities that this restructuring will allow. We have elected to place students on one of four inpatient rotations for the entire 6 weeks. The inpatient experience will be supplemented with the equivalent of two half-day outpatient experiences, which will occur in a variety of settings including community mental health, forensic facilities, child/adolescent settings, geriatric units, and substance abuse treatment programs. Students will continue to observe ECT treatment, and they will be required to pass a written formal psychiatry work-up, which includes a differential diagnosis, plan, and rationale for the primary diagnosis and treatment plan. Sixty percent of the students' final grade will be based upon an evaluation of their clinical performance and 40% of the final grade will be based upon their performance on the National Board Exam. Students will also be required to pass an Objective Standardized Clinical Exam (OSCE). The didactic series will remain largely unchanged and will include a Foundations of Clinical Medicine module, which will address the basic science underpinnings for clinical diagnoses and practice.

The Department is in the process of developing six electives in the areas of Child and Adolescent Psychiatry, Consultation/Liaison Psychiatry at MUH, Consultation/Liaison Psychiatry at VAMC, Forensic Psychiatry, Geriatric Psychiatry, and Substance Abuse Treatment Clinic at VAMC. We will continue our process of carefully soliciting student feedback about the newly restructured clerkship and incorporating that feedback as we make strategic changes in the clerkship experience.

### **APA Nancy C. A. Roeske, M.D. Award**

In January 2006, Dr. Stephen McLeod-Bryant received the American Psychiatric Association Nancy C.A. Roeske, M.D. Award for Excellence in Medical Education by a paid faculty member. Dr. Elliott Levy received the Roeske Award in the category for volunteer faculty.

## **Residency Training**

*Alberto Santos, M.D., Training Director*

*D. Walter Hiott, M.D., Co-Training Director*

### **Residents Score High on PRITE**

The Accreditation Council for Graduate Medical Education sets standards for U.S. residency training programs. One of the requirements is for programs to objectively assess the cognitive medical knowledge of each resident. To meet this requirement, the MUSC psychiatry program uses the Psychiatry Resident In-Training Examination (PRITE) developed by the American College of Psychiatrists, which provides an assessment of knowledge base in the clinical science of psychiatry. This standardized test is given in October to psychiatry residents throughout the nation. The PRITE was administered to our residents this year on October 14, 2005. Compared to all other U.S. residents who took the PRITE, our 1st and 2nd year residents scored above the 85<sup>th</sup> percentile, and our 3rd year residents scored in the 91<sup>st</sup> percentile. Congratulations residents!

## Resident Selection Committee Completes Interview Process

Each year from September to February, a group of faculty and residents work together to try to bring the "best and brightest" medical students to MUSC for psychiatry residency training. This year our department is offering 12 positions through the National Residency Match Process. (We are also offering 2 positions in our combined Psychiatry and Internal Medicine residency and one position in our combined Psychiatry and Neurology residency program.) This year, we received over 300 applications from students (and doctors) from across the US and around the world. In order to determine which of these applicants to interview, a small but dedicated group reviewed and rated these applications. Interviews began in mid-November and ended on January 30. During this time, we met approximately 60 very talented people, and our Selection Committee has met weekly to discuss their applications and visits with us in order to establish a rank order list. Each year, we have a good time serving on this goal-oriented committee but we have also had some very lively debates as the quality of the applicants that we've interviewed has been very good. It was especially encouraging to hear many of our applicants say that they interviewed with us because they were told by their mentors that MUSC is among the top training programs in the nation in psychiatry. We are all looking forward to March 16, the national Match Day, when all of the applicants find out at high noon where they will be doing their residency training. Many thanks to all department members who served on the Selection Committee or who interviewed our applicants and special thanks to Sherrie Osbourne, our staff Match Coordinator, for all of her work with the Committee this year.

## Psychology Interns

*Dean Kilpatrick, Ph.D.*

The Psychology Internship has had a very busy Fall and Winter. With nearly a record number of applications (up over 20% over last year), the Psychology Education Committee invited and interviewed over 100 applicants during December and January. These applicants came from across the United States and Canada. Given the outstanding pool of candidates, the Internship Program is anticipating another excellent class next year. The match lists get submitted on February 8, and the results arrive February 27.



*Bodenlos*



*Hajcak*

There is also excellent news to report regarding the current internship class. Behavioral Medicine intern Jamie Bodenlos, who is working with Drs. Jeff Borckardt and Darlene Shaw, received a University Research Council grant for her study, "The Effects of Vagal Nerve Stimulation on Food Cravings, Eating Behaviors, and Obesity." This research represents an extension of the important research she did at her graduate institution, Louisiana State University. In addition, current intern Greg Hajcak has already accepted a faculty position for next year. Although he received several faculty offers, Greg decided to accept a position as an Assistant Professor at SUNY-Stony Brook, one of the most prestigious Clinical Psychology training programs in the nation. Congratulations to both Jamie and Greg!

## Professional Awards & Association Appointments

### **Sudie E. Back, Ph.D.**

- Travel Award, NIDA/APA Early Career Investigators Session, APA Annual Meeting;
- Women and Gender Junior Investigator Travel Award, NIDA

### **Kathleen T. Brady, M.D.**

- Director, General Clinical Research Center, MUSC
- Associate Dean for Clinical Research, MUSC

### **Timothy Brewerton, M.D.**

- Best Doctors in America, 2005-2006
- Finance Committee, Academy of Eating Disorders

### **Deborah Deas, M.D., M.P.H.**

- Fellow, Executive Leadership in Academic Medicine (ELAM) Drexel University, July 2005-June 2006.

**Paul Gold, Ph.D.**

- Elected to the Board of Directors, Action Council for Mental Health and Health and Human Services.
- Dr. Gold was also recognized by the Faculty Senate for his extraordinary service to the Senate and the Medical University of South Carolina.

**Anouk L. Grubaugh, Ph.D.**

- Editorial Board, *Journal of Traumatic Practices*
- Veterans Affairs Health Services Research and Development Associate Investigator Award

**Meredith Lyons-Crews, LISW-CP, DSW**

- Children's Behavioral Health Quality Improvement Workgroup

**Stephen McLeod-Bryant, M.D.**

- Chair-Elect, American Psychiatric Association Assembly's Committee of Minority/
- Underrepresented Representatives

**Jacobo Mintzer, M.D.**

- Best Doctors in America, 2006
- Treasurer Elect, International Psychogeriatric Association (IPA)
- Named to represent MUSC on the Physician Advisory Board for Geriatric Loan Forgiveness Program

**John M. Oldham, M.D**

- Member, Benjamin Rush Society

**M. Foster Olive, Ph.D.**

- Associate Member, American College of Neuropsychopharmacology

**Alyssa Rheingold, Ph.D.**

- Good Citizen Award, Charleston County Sheriff's Office, October 2005

**Darlene Shaw, Ph.D.**

- Executive Director, Student Health and Wellness, in the MUSC Division of Academic and Student Support Services
- Treasurer and Membership Director, Association of Directors of Medical Student Education in Psychiatry

**Gail W. Stuart, Ph.D.**

- 2005 Special Advisory Board, Freedom From Fear
- Book of the Year Award 2005 - Principles and Practice of Psychiatric Nursing, *American Journal of Nursing*

**Himanshu Upadhyaya, M.D.**

- Appointed to the General Clinical Research Center Advisory Committee, MUSC
- Editorial Board, *International Journal of Psychiatry in Medicine*

**Angela Waldrop, Ph.D.**

- Early Career Investigator Award, sponsored by the College on Problems of Drug Dependence

## New Appointments and Hires

**M. Foster Olive, Ph.D.**

Appointed Full Member of the Graduate Faculty, College of Graduate Studies

*Dr. Olive is an Assistant Professor in the Department of Psychiatry, and is housed in the Center for Drug and Alcohol Programs.*

**Cynthia Swenson, Ph.D.**

Appointed Associate Member of the Graduate Faculty, College of Graduate Studies

*Dr. Swenson is an Associate Professor in the Department of Psychiatry, and is housed in the Family Services Research Center.*

## **Institute of Psychiatry**

### ***New Employees***

- Jennifer Allen, Data Coordinator, Financial Services
- Louis Ambroise, Human Services Specialist, Nursing
- Karen Ancrum, Administrative Specialist, 4N
- Tara Barber, Human Services Specialist, 2N
- Jennifer Bonner, Human Services Specialist, 2N
- Emily Bowen, Medical Technologist, Lab
- Jessica Brown, Clin. Nurse Coordinator, CDAP Inpatient
- Sheila Bryan, Master's Social Worker, CDAP Inpatient
- Manette Camarata, Social Worker III, 3N
- Clayton Cooke, STAR Ladson
- Demetrio (Dee) Deterville, Administrative Assistant, IOP Administrator's Office
- Betsy Gallivan, Human Services Specialist, 3N
- Mary Griffiths, Clin. Nurse Coordinator, BICU
- Antoinette Harley, Administrative Specialist II, 3N
- Michael Hartley, Nurse Manager, 1N and Geropsychiatry
- Monica Harvath, Human Services Specialist, 3N
- Tessa Heil, Patient Appointment and Registration Representative, Financial Services
- Julia Jaskwhich, Human Services Specialist, 3N
- Megan Low, Human Services Specialist, 3N
- Jordan Lucas, Human Services Specialist, 3N
- Brian Mack, Human Services Specialist, Nursing
- Ursula Malvasio, House Services Coordinator
- Dreema Murray, Lab Specialist, Lab
- Jason Ortmeier, Human Services Specialist, 2N
- Marlene Pearson, Human Services Specialist, Children's Day Treatment-IMPACT
- Bernadette Pinkney, Nurse Practitioner, Admissions
- Bryan Pryor, Human Services Specialist, 3N
- Angela Richards, Clin. Nurse Coordinator, BICU
- Tanova Robinson, Human Services Specialist, 2N
- Robin Rubino, Clinical Nurse Coordinator, 4N
- Laura Scheider, Clinical Nurse Coordinator, 2N
- Misty Servedio, Human Services Specialist, Children's Day Treatment-STAR
- Mary Shearer, Human Services Specialist, Nursing
- Maurice Smith, Patient Appointment and Registration Representative, Financial Services
- Demetrial Smith, Patient Transporter, Facilities Management
- Kimberly Thomas, Patient Appointment and Registration Representative, CDAP Outpatient
- Clarissa Thomas, Clinical Nurse Coordinator, 3N
- Sandra Trudeau, Clinical Nurse Coordinator, 2N
- James Verner, Human Services Specialist, 3N
- Susan Walton, Clinical Nurse Coordinator, 4N
- June Watson, Teacher, STAR Ladson
- George Webb, Master's Social Worker, STAR Ladson
- Tarika White, Patient & Appointment Representative, Financial Services
- John Wilford, Human Services Specialist, 2N
- Alton Willis, Human Services Specialist, Nursing

## **Department of Psychiatry**

### ***New Employees***

- Samantha Anderson, Statistical and Research Analyst I, CNS
- Julie Anderson, Student Intern, BSL
- Mary Ann Timmerman, Statistical and Research Analyst II, Health Services Research
- Brittany Baber, Administrative Specialist I, NCVC
- Kelly Bolger, Student Intern, CNS
- Barbara Bozarth, Administrative Coordinator II, CDAP
- Krystal Brooks, Statistical and Res Analyst I, CNS
- Joshua Brown, Postdoctoral Fellow, WMC
- Margaret Burruss, Administrative Specialist II, BSL
- Douglas Christie, Statistical and Res Analyst I, Youth
- Monica Fitzgerald, Postdoctoral Fellow, NCVC
- Lauren Forster, Student Intern, BSL
- Sarah Henderson, Administrative Specialist II, BSL
- Vanessa Hill, Psychiatry Development Officer
- Geri Holden, Student Intern, WMC
- Kristen Hudak, Administrative Assistant, CDAP

- Almarie Hudson, Administrative Specialist II, Geropsychiatry
- Hong-jie Yuan, Research Specialist II, CNS
- Kathryn Kniele, Research Specialist II, Geropsychiatry
- Andrew Larkin, Research Specialist I, Geropsychiatry
- Ashley Leinbach, Statistical and Research Analyst II, CNS
- Toby Markowitz, Student Intern, CDAP
- Courtney Merritt, Program Assistant, CDAP
- Sarah Miles, Program Assistant, CDAP
- Radhiyah "Thea" Miller, Administrative Coordinator I, Public and Youth
- Samantha Mintz, Administrative Specialist I, NCVC
- Caroline Mitchell, Clerical Specialist, CDAP
- Allison Moseley, Statistical and Research Analyst, CNS
- Erin Nolen, Administrative Specialist I, Weight Mgmt Center
- Melissa Overstreet, Research Specialist I, CDAP
- Anna Rauseo, Clerical Specialist, CNS
- Elise Richard, Program Assistant, CDAP
- Alice Wehman, Administrative Assistant, CNS
- Carolyn Wenner, Program Assistant, CDAP
- Amy Yanke, Program Assistant, CDAP

#### **Promotion**

- Kevin Armstrong, Statistician III, Family Services

## Conferences & Educational Opportunities

### Psychiatry Grand Rounds

Psychiatry Grand Rounds are held on Fridays from 11:30 a.m. to 1:00 p.m. in the IOP Auditorium. The following are confirmed speakers in the Spring 2006 Grand Rounds Series through the end of the calendar year. The complete 2005-2006 schedule is posted online at [www.musc.edu/psychiatry/education/cme/gnd\\_rnds.htm](http://www.musc.edu/psychiatry/education/cme/gnd_rnds.htm).

- |             |  |
|-------------|--|
| February 10 | <p><b>“Maternal Mental Illness: The First Adverse Life Event”</b><br/> <b>Zachary N. Stowe, M.D.</b><br/>         Department of Psychiatry, Emory University School of Medicine</p>  |
| February 17 | <p><b>“New Perspectives on Neurobiology”</b><br/> <b>Larry J. Siever, M.D.</b><br/>         Executive Director, Mental Illness Research, Education, &amp; Clinical Center (MIRECC)<br/>         Bronx VA Medical Center<br/>         Professor of Psychiatry, Mt. Sinai School of Medicine</p>         |
| February 24 | <p><b>Clinical Case Conference</b><br/> <b>(MUSC Faculty, Staff, Trainees only)</b><br/> <i>Please check the website for topic, presenter(s), and discussant(s).</i></p>   |
| March 3     | <p><b>“Serotonin and Depression: From Basic Psychobiology to Clinical Relevance”</b><br/> <b>Robert N. Golden, M.D.</b><br/>         Stuart Bondurant Distinguished Professor and Vice Dean<br/>         Department of Psychiatry, School of Medicine, University of North Carolina at Chapel Hill</p> |
| March 10    | <p><b>“The Contribution of Healthcare to Health Disparities”</b><br/> <b>Barbara C. Tilley, Ph.D.</b><br/>         Chair and Professor, Department of Biostatistics, Bioinformatics, and Epidemiology<br/>         Medical University of South Carolina</p>  |

- March 17            **“Treatment of Bipolar Depression”**  
**Maria A. Oquendo, M.D.**  
Professor of Clinical Psychiatry, Director of the Clinical Evaluation Core  
Conte Center for the Neurobiology of Mental Disorders, Department of Psychiatry  
Columbia University College of Physicians and Surgeons
- March 24            **“New Developments in Treating Pediatric Anxiety and Mood Disorders”**  
**John March, M.D., M.P.H.**  
Professor of Psychiatry, Chief of Child and Adolescent Psychiatry, Duke University
- March 31            **“Ten Year Course of Borderline Personality Disorder”**  
**Mary C. Zanarini, Ed.D.**  
Associate Professor of Psychology, Department of Psychiatry, Harvard Medical School

## **Mind Your Health Community Education Seminar Series**

**February 15, March 22, and April 29, 2006**

All seminars are held from 6:00-7:30 pm in the IOP Auditorium.

Credit: 1.5 CE credits will be awarded to Social Workers, PhD's, Counselors, Psycho-Educational Specialists, Marriage & Family Therapists. This series is open to the public, and there will be no charge for MUSC employees.

Confirmed speakers: Mary Beth Brock, Stephen McLeod-Bryant, M.D., and Suzanne Thomas, Ph.D. Detailed information and registration available online at [www.muschealth.com/psychevents](http://www.muschealth.com/psychevents).

## **Day of Discovery: Research to Practice - Current Topics in Psychiatric Care**

**March 23, 2006**

This conference will provide mental health clinicians and private practice physicians with current information that will aid them in their care for patients suffering with brain disorders. The presenters will discuss a wide range of topics including schizophrenia, emergency psychiatry, adolescent substance abuse and serial killers. Confirmed speakers: Kevin Gray, M.D., Susan Hardesty, M.D., Margaret Melikian, D.O., Rush Simpson, M.D., Himanshu Upadhyaya, M.D., and Ben Weinstein, M.D. Detailed information will be posted online at [www.muschealth.com/psychevents](http://www.muschealth.com/psychevents).

## **2006 Update in Psychiatry: Psychotherapy**

**June 2 and 3, 2006**

We extend an invitation to you to attend our 19th Annual Update in Psychiatry conference, held during Spoleto Festival USA. This year's theme will be Psychotherapy. As usual, our speaker roster includes some of the most prominent experts in the field from all over the country. Please mark your calendars and make plans to join us in June 2006. All professionals with mental health interests are welcome to participate. Confirmed speakers: Glen Gabbard, M.D., Scott Henggeler, Ph.D., Otto Kernberg, M.D., Patricia Resick, Ph.D., Michelle Riba, M.D., Allan Tasman, M.D., and Jesse Wright, M.D., Ph.D. For detailed information about this conference, please visit our website at [www.musc.edu/psychiatry/update.htm](http://www.musc.edu/psychiatry/update.htm).

## **Health Care Education Series, College of Nursing**

### **Ongoing Classes**

Dr. Tara Hulsey, Associate Dean for Faculty and Associate Professor in the College of Nursing, has developed a new web-based curriculum for a Certificate in Health Care Education. This program is designed to provide health care professionals with an understanding of basic teaching principles, learner needs, teaching and learning evaluation methods, and effective approaches to web based and web enhanced teaching, and includes three courses that may be taken in any order and the courses will be repeated on an ongoing basis. Each course will award 45 Contact Hours for nurses and 37.5 CEUs for other healthcare professionals. Detailed information is available online at [www.musc.edu/nursing/departments/continuingeducation/health\\_care\\_educator.htm](http://www.musc.edu/nursing/departments/continuingeducation/health_care_educator.htm).

## Compliance Education for 2005-2006

As you are aware, all faculty, staff, and agents\*\* of University Medical Associates (UMA) are required to complete 3 units of compliance training each year consisting of one unit of Code of Conduct (General) Training and 2 units of Billing training. All training must be completed by June 30, 2006.

Two of the 3 units consist of mandatory classes. These are:

- 1) Code of Conduct Training: This training is available on Computerized Annual Training and Tracking System (CATTS), our web based training system (see instructions below).
- 2) A specialty specific mandatory unit of billing training. A unit has been developed which is tailored to the issues of your department or division. This is available on CATTS. You may also arrange with your departmental Compliance Manager to have this material presented at a faculty meeting.

The remaining training unit may be satisfied by selecting from a variety of training options:

- 1) Live UMA sponsored Billing training sessions will be offered beginning in February. A schedule of all classes will be published in November and posted on the UMA Compliance Website at [www.musc.edu/uma/compliance](http://www.musc.edu/uma/compliance)
- 2) Departmental Training Sessions such as faculty meetings or one-on one education sessions.
- 3) Web-based training through CATTS.
- 4) Outside seminars on coding and compliance approved for CEU's and CME's
- 5) Training videos and CD's available through your departmental Compliance Manager (792-4131) or the Compliance Administrative Coordinator (876-1321).

### 2006 UMA Compliance Education - CATTS Instructions

- 1) Go to the CATTS website at <http://www.educode.com/musc>
- 2) Log-in with your Learner ID (first 2 letters of your first name with the last 6 digits of your social security number). The default password is hello.

#### To Self-Enroll:

- 1) Click Online Learning, then click Self Enroll
- 2) Select University Medical Associates
- 3) Next to 2006 UMA Compliance Education, Click Signup Now
- 4) Click Add Module

#### To View Lessons:

- 1) Return to Online Learning, then click My Lesson Plan
- 2) To clean up your screen and remove the lessons that do not apply to you, click on the red minus sign next to the lesson name. (If you accidentally remove a lesson you need, you will need to go through the self-enroll process again.)
- 3) Click on the title name to begin the lesson.
- 4) Once you have completed the lesson, you can then take the test. Click on test.
- 5) You must score 80% or better to pass.

Thank you for your continued participation in UMA's compliance efforts. If you have any questions about this process, please contact Kimberly Anderson at 792-4131 or [anderske@musc.edu](mailto:anderske@musc.edu).

\*\*Agent – a University or outside-contracted employee who assists in the provision of medical care, billing, coding, or medical record documentation which supports services billed by University Medical Associates. Contact your Compliance Manager or the Compliance Department for assistance in determining an individual's status as an "agent".

## Publications

For the fourth issue of the PN, we list below all peer-reviewed publications reported to us that have been published between July 1 and December 31, 2005. The list shown is in alphabetical order by the first author's last name, and psychiatry faculty are indicated in bold.

- 1) **Anton RF, Moak DH, Latham P, Waid LR, Myrick H, Voronin K, Thevos A, Wang W**, Woolson R: Naltrexone combined with either cognitive behavioral or motivational enhancement therapy for alcohol dependence. *Journal of Clinical Psychopharmacology* 25(4):349-357, 2005.
- 2) **Anton RF, Randall CL**: Measurement and choice of drinking outcome variables in The Combined Study. *Journal of Studies on Alcohol Supplement* 15:104-109, 2005.
- 3) **Back SE, Brady KT**, Jackson JL, Salstrom S, Zinzow H: Gender differences in stress reactivity among cocaine dependent individuals. *Psychopharmacology* 180(1):169-176, 2005.
- 4) **Back SE, Brady KT**, Jaanimägi U, Jackson J: Cocaine dependence and PTSD: Symptom interplay and treatment preferences. *Addictive Behaviors* 31(2):351-354, 2005.
- 5) **Back SE**, Jackson JL, **Sonne S, Brady KT**: Alcohol dependence and PTSD: Differences in clinical presentation and response to cognitive-behavioral therapy by order of onset. *Journal of Substance Abuse Treatment* 29:29-37, 2005.
- 6) Bedwell JS, **Horner MD**, Yamanaka K, Li X, **Myrick H, Nahas Z, George MS**: Functional neuroanatomy of subcomponent cognitive processes involved in verbal working memory. *International Journal of Neuroscience* 115:1017-1032, 2005.
- 7) **Brady KT**, Sinha R: Co-Occurring mental and substance use disorders: the neurobiological effects of chronic stress. *American Journal of Psychiatry* 162:1483-1493, 2005.
- 8) **Brady KT, Verduin ML**: Pharmacotherapy of co-morbid mood, anxiety, and substance use disorders. *Substance Use and Misuse* 40:2021-2041, 2005.
- 9) Campanelli PC, Cleek E, **Gold PB**, Lieberman HJ, Nakagawa A, Skoraszewski M: Screening offenders with histories of mental illness and violence for community housing. *Journal of Psychiatric Practice* 11:279-288, 2005.
- 10) Carlozzi N, **Horner MD**: Convergent and divergent validity of the Gordon Diagnostic System in a heterogeneous, adult clinical sample. *Archives of Clinical Neuropsychology* 20:830-831, 2005.
- 11) Carter RE, **Sonne SC, Brady KT**: Practical considerations for estimating clinical trial accrual periods: application to a multi-center effectiveness study. *BMC Medical Research Methodology* 5:11, 2005.
- 12) Cook JA, Lehman AF, Drake RE, McFarlane WR, **Gold PB**, Leff HS, Blyler CR, Toprac MG, Razzano LA, Burke-Miller JK, Blankertz LE, Shafer MS, Dudek K, Grey DD: Integration of psychiatric and vocational services: a multi-site randomized implementation effectiveness trial of supported employment. *American Journal of Psychiatry* 162:1948-1956, 2005.
- 13) **Cluver JS**, Schuyler D, **Frueh BC**, Brescia F, **Arana GW**: Remote psychotherapy for terminally ill cancer patients. *Journal of Telemedicine and Telecare* 11:157-159, 2005.

- 14) **Deas D, Roberts JS**, Grindlinger D: The Utility of DSM-IV Criteria in Diagnosing Substance Abuse/Dependence in Adolescents. *Journal of Substance Use* 10(1):10-21, 2005.
- 15) **Donovan JL, DeVane CL, Malcolm RJ**, Mojsiak J, Chiang CN, Elkashef A, Taylor RM: Modafinil influences the pharmacokinetics of intravenous cocaine in healthy cocaine-dependent volunteers. *Clinical Pharmacokinetics* 44(7):753-65, 2005.
- 16) Duffy FF, Narrow W, West JC, Fochtmann LJ, Kahn DA, Suppes T, **Oldham JM**, McIntyre JS, Manderscheid RW, Sirovatka P, Regier D: Quality of care measures for the treatment of bipolar disorder. *Psychiatric Quarterly* 76(3):213-30, 2005.
- 17) Elhai JD, Kashdan TB, **Frueh BC**: What is a traumatic event? (Letter). *British Journal of Psychiatry* 187:189-190, 2005.
- 18) Elhai JD, North TC, **Frueh BC**: Health service use predictors among trauma survivors: A critical review. *Psychological Services* 2:3-19, 2005.
- 19) Faison W, **Mintzer J**: The growing, ethnically diverse aging population: Is our field advancing with it? *American Journal of Geriatric Psychiatry* 13:7, 2005.
- 20) **Frueh BC**, Elhai JD, **Grubaugh AL**, **Monnier J**, Kashdan T, Sauvageot JA, **Hamner MB**, Burkett BG, **Arana GW**: Documented combat exposure of US veterans seeking treatment for combat-related post-traumatic stress disorder. *British Journal of Psychiatry* 186:467-472, 2005.
- 21) **Frueh BC**, Henderson S, **Myrick H**: Telehealth service delivery for persons with alcoholism. *Journal of Telemedicine and Telecare* 11:372-375, 2005.
- 22) **Frueh BC**, Knapp RG, **Cusack KJ**, **Grubaugh AL**, Sauvageot JA, Cousins VC, Yim E, Robins CS, **Monnier J**, **Hiers TG**: Patients' reports of traumatic or harmful experiences within the psychiatric setting. *Psychiatric Services* 56:1123-1133, 2005.
- 23) **Gold PB**, **Meisler N**, **Santos AB**, Carnemolla MA, Williams OH, Keleher J: Randomized trial of supported employment integrated with assertive community treatment for rural adults with severe mental illness. *Schizophrenia Bulletin*. Published online September 21, 2005.
- 24) **Grubaugh AL**, **Magruder KM**, **Waldrop AE**, Elhai JD, Knapp RG, **Frueh BC**: Subthreshold PTSD in primary care: Prevalence, psychiatric disorders, healthcare use, and functional status. *Journal of Nervous and Mental Disease* 193:658-664, 2005.
- 25) **Grubaugh AL**, **Frueh BC**, **Magruder KM**: Do research participants who decline to answer sexual trauma questions differ from those who do not? (Letter). *American Journal of Psychiatry* 162:1757-1758, 2005.
- 26) Hoge M, Morris J, Daniels A, Huey L, **Stuart G**, Adams N, Paris M, Goplerud E, Horgan C, Kaplan L, Sorti S, Dodge J: Report of recommendations: the Annapolis Coalition conference on behavioral health workforce competencies. *Administration and Policy in Mental Health* 32(5,6):651-663, 2005.
- 27) Kratochvil CJ, DelBello M, **Upadhyaya HP**, Wozniak J: Pharmacological management of new onset bipolar disorder. *Journal of the American Academy of Child and Adolescent Psychiatry* 44(11):1198-1200, 2005.



- 28) Leff HS, Cook JA, **Gold PB**, Toprac MG, Blyler CR, Goldberg RW, McFarlane WR, Shafer MS, Allen E, Camacho-Gonsalves T, Raab B, Burke-Miller J: Inside employment interventions: effects of job development and job support on competitive employment of persons with severe mental illness. *Psychiatric Services* 56:1237-1244, 2005.
- 29) Mackin RS, **Horner MD**: Relationship of the Wender Utah Rating Scale to objective measures of attention. *Comprehensive Psychiatry* 46:468-471, 2005.
- 30) Mackin RS, **Horner MD**, Harvey RT, Stevens LA: The relationship between neuropsychological measures and employment problems in outpatients with substance abuse. *Rehabilitation Psychology* 50:158-163, 2005.
- 31) Nguyen SA, DeLeon CP, **Malcolm R, Middaugh L**: Tiagabine reduces ethanol reward in C57BL/6 mice under acute and chronic administration regimens. *Synapse* 56:135-146, 2005.
- 32) Noel PH, **Frueh BC**, Larme AC, Pugh JA: Needs and preferences of primary care patients with multimorbidity. *Health Expectations* 8:54-63, 2005.
- 33) **Oldham JM**: Cultural competence. *Journal of Psychiatric Practice* 11(4):217, 2005.
- 34) **Oldham JM**: Disasters and Perpetrators. *Journal of Psychiatric Practice* 11(5):275, 2005.
- 35) **Oldham JM**: The risk of unintended consequences. *Journal of Psychiatric Practice* 11(6):359, 2005.
- 36) **Olive MF**: Sleep Aids. In: Triggler DJ (ed) *Drugs - The Straight Facts*, p. 106. Chelsea House Publishers: Langhorne, PA, 2005.
- 37) Quello SB, **Brady KT, Sonne SC**: Mood disorders and substance use disorder: a complex comorbidity. *NIDA Science and Practice Perspectives* 3(1):13-24, 2005.
- 38) Razzano LA, Cook JA, Burke-Miller JK, Mueser KT, Pickett-Schenk SA, Grey DD, Goldberg RW, Blyler CR, **Gold PB**, Leff HS, Lehman AF, Shafer MS, Blankertz LE, McFarlane WR, Toprac MG, Dudek K: Clinical factors associated with employment among people with severe mental illness: Findings from The Employment Intervention Demonstration Program. *Journal of Nervous and Mental Disease* 193:705-713, 2005.
- 39) Reynolds J, **Mintzer J**: Alzheimer's disease update: new targets, new options. *Drug Benefit Trends* 17(2):83-88, 91-95, 2005.
- 40) Robins CS, Sauvageot JA, **Cusack KJ**, Suffoletta-Maierle S, **Frueh BC**: Consumers' perceptions of negative experiences and "sanctuary harm" in psychiatric settings. *Psychiatric Services* 56:1134-1138, 2005.
- 41) Rosenberg PB, Onylike CU, Katz IR, Porsteinsson AP, **Mintzer JE**, Schneider LS, Rabins PV, Meinert CL, Martin BK, Lyketsos CB: Clinical application of operationalized criteria for "Depression of Alzheimer's Disease." *International Journal of Geriatric Psychiatry* 20(2):119-127, 2005.
- 42) Sanchis-Segura C, Grisel JE, **Olive MF**, Ghozland S, Koob GF, Roberts AJ, Cowen MS: Role of the endogenous opioid system on the neuropsychopharmacological effects of ethanol: new insights about an old question. *Alcoholism: Clinical and Experimental Research* 29(8):1522-1527, 2005.
- 43) Scott RW, **Deas D**: An Overview of Controlled Studies of Anxiety Disorders Treatment in Children and Adolescents. *Journal of the National Medical Association* 97(1):1-12, 2005.

- 44) Skodol AE, **Oldham JM**, Bender DS, Dyck IR, Stout RL, Morey LC, Shea MT, Zanarini MC, Sanislow CA, Grilo CM, McGlashan TH, Gunderson JG: Dimensional representations of DSM-IV personality disorders: relationships to functional impairment. *American Journal of Psychiatry* 162(10):1919-1925, 2005.
- 45) Tariot P, Raman R, Jakimovich L, Schneider L, Porsteinsoon A, Thomas R, **Mintzer J**, Brenner R, Schafer K, Thal L: Alzheimer's disease cooperative study/valproate nursing home study group: Divalproex sodium in nursing home residents with possible or probable Alzheimer's disease complicated by agitation. *American Journal of Geriatric Psychiatry* 13:11, 2005.
- 46) **Thomas SE**, Drobos DJ, **Deas D**: Alcohol cue reactivity in alcohol-dependent adolescent. *Journal of Studies on Alcohol* 66(3):335-360, 2005.
- 47) **Upadhyaya HP**: A Closer Look at Substance Use Disorders in Individuals with ADHD, Faculty Editor, CME Monograph, University of Michigan School of Medicine, 2005.
- 48) **Upadhyaya HP**, **Deas D**, **Brady KT**: A practical clinical approach to the treatment of nicotine dependence in adolescents. *Journal of the American Academy of Child and Adolescent Psychiatry* 44(9):942-946, 2005.
- 49) **Upadhyaya HP**, Rose K, Wang W, O'Rourke K, Sullivan B, **Deas D**, **Brady KT**: ADHD, medication treatment, and substance use patterns among adolescents and young adults. *Journal of Child and Adolescent Psychopharmacology* 15(5):799-809, 2005.
- 50) **Verduin ML**, Tolliver BK, **Brady KT**: Substance abuse and bipolar disorder. *MedScape*, posted December 5, 2005.

## Presentations

*For the fourth issue of the PN, we list below professional presentations given between July 1 and December 31, 2005. Names of psychiatry faculty members are bolded.*

- 1) **Bachman D**, Nietert P, Sutherland S, Sambamurti K, Granholm AC, Kindy M, **Mintzer J**: Effects of traditional cardiovascular risk factors on change in cognitive function later in life in a biracial cohort: the Charleston Heart Study. Oral presentation given at the 12<sup>th</sup> Congress of the IPA, Stockholm, Sweden.
- 2) **Back SE**, **Brady KT**, Jaanimägi U, Jackson J: Cocaine dependence and PTSD: Symptom interplay and treatment preferences. Poster presented at the annual meeting of the American Psychological Association, Washington, DC.
- 3) **Back SE**, Jaanimägi U, **Brady KT**, Jackson J: Gender differences in individuals with cocaine dependence and PTSD. Poster presented at the annual meeting of the American Psychological Association, Washington, DC.
- 4) Blanton MG, Griffin WC III, Hicks MP, Falduto MT, Magnuson SR, **Olive MF**: Genomic effects of the mGlu5 antagonists MPEP and MTEP: a whole genome microarray study in the rat frontal cortex and nucleus accumbens. Society for Neuroscience Abstracts, Washington, DC.
- 5) **Brady KT**: Negotiating for time, space and resources with an institution. Mentored K Awardee Meeting: Making the Transition to Independent Drug Abuse Scientist, NIH/NIDA, Bethesda, MD.

- 6) **Brady KT**: Side effects of antidepressants in women. MUSC OB/GYN, Women's Health Conference, Charleston, SC.
- 7) **Brewerton TD**: Dansky BS, **O'Neil PM**, **Kilpatrick DG**: Season and Month of Birth in Bulimia Nervosa: Results from the National Women's Study. Eleventh Annual Meeting of the Eating Disorders Research Society, Toronto, Canada.
- 8) **Brewerton TD**: An Overview of the Eating Disorders, Eating Disorders Program, Menninger Foundation, Houston, TX (invited workshop).
- 9) **Brewerton TD**: The Role of Psychopharmacology in the Treatment of Eating Disorders," Eating Disorders Program, Menninger Foundation, Houston, TX (invited workshop).
- 10) **Brewerton TD**: Trauma, Eating Disorders and Comorbidity: Research Foundations and Integrative Treatment Approaches, Annual Renfrew Conference on Eating Disorders, Philadelphia, PA (invited workshop).
- 11) Burke-Miller J, Cook JA, **Gold PB**: Demographic characteristics and employment among people with severe mental illness: Implications for evidence-based best practices and policy. Presented at the 133rd Annual Meeting of the American Public Health Association, Philadelphia, PA.
- 12) Cook JA, Goldberg RW, McFarlane W, Shafer MS, **Gold PB**: A simulation of provider payments under the "Ticket to Work" program using data from individuals receiving evidence-based practice supported employment. Presented at the 133rd Annual Meeting of the American Public Health Association, Philadelphia, PA.
- 13) De Deyn PP, Katz I, **Mintzer J**, Brodaty H, Greenspan A: Risperidone in the treatment of psychosis of Alzheimer's disease (AD): a meta-analysis of 4 controlled trials. Poster presented at the 12th Congress of the IPA, Stockholm, Sweden.
- 14) **Frueth BC**: Improving PTSD treatment for veterans. Invited presentation and discussant at the American Enterprise Institute's: Soldiers, Psyche, and the Department of Veterans Affairs, Washington, DC.
- 15) **Frueth BC**: Mental health services research with trauma survivors in the public sector. Invited presentation and discussant at the University of South Dakota's Disaster Mental Health Institute, Eighth Annual Conference: Innovations in Disaster Psychology—Research Strategies and Methodology, Rapid City, SD.
- 16) **Frueth BC**: Improving mental health service delivery for adult trauma survivors. Grand Rounds presented at the Department of Psychiatry and Behavioral Sciences, Medical University of South Carolina, Charleston, SC.
- 17) **Frueth BC**: Improving mental health service delivery for adult trauma survivors. Invited presentation at the Department of Psychology, University of Hawaii at Hilo, Hilo, HI.
- 18) **Gray K**, **LaRowe S**, **Upadhyaya H**: Marijuana Cue Reactivity and Medication in Adolescents: A Pilot Study. Poster presented at the American Academy of Child and Adolescent Psychiatry (AACAP) Annual Meeting in Toronto, Canada.
- 19) **Grubaugh AL**, **Monnier J**, **Magruder KM**, Knapp RG, **Frueth BC**: Psychiatric status of female veterans in four primary care clinics. Poster presented at the 21st Annual Meeting of the International Society for Traumatic Stress Studies, Toronto, Canada.

- 20) **Grubaugh AL, Frueh BC, Cusack K**, Yim E, Knapp RG: Screening for PTSD among patients with severe mental illness. Poster presented at the 21st Annual Meeting of the International Society for Traumatic Stress Studies, Toronto, Canada.
- 21) **Hanson RF, Ruggiero K**, Suffoletta-Maierle S, **Smith DW**: Preliminary Findings: An Effectiveness Study for Child Sexual Abuse Treatment. Paper presented at the annual conference for International Society on Traumatic Stress Studies, Toronto, Canada.
- 22) Kindy M, Yu J, Hong Z, Sambamurti K, **Mintzer J**: Effects of cholesterol and diabetes on AD pathogenesis in APP transgenic mice. Oral presentation given at the 12<sup>th</sup> Congress of the IPA, Stockholm, Sweden.
- 23) **Malcolm R**: Consequences of Repeated Alcohol Detoxifications: New Findings with Anticonvulsants to Treat Withdrawal Syndrome. NIEHS/NIAAA Symposium, Raleigh, NC.
- 24) Mangini LD, Bowers M, Chen BT, Bonci A, Janak PH, **Olive M**: Acamprostate attenuates cocaine-induced reinstatement of cocaine-seeking behavior. Society for Neuroscience Abstracts, Washington, DC.
- 25) **Mintzer J**: Effects of diabetes mellitus and other early CVD risk factors on change in cognitive function later in life. Oral presentation given at the 12<sup>th</sup> Congress of the IPA, Stockholm, Sweden.
- 26) **Mintzer J**, Marder S, Sachs G, Radhakrishnan M, Crandall D, Pultz J: Effects of Aripiprazole across disease states in patients with high and low agitation. Poster presented at the 12<sup>th</sup> Congress of the IPA, Stockholm, Sweden.
- 27) **Oldham JM**: Personality Disorders: New Developments and Current Controversies. Invited Lecture, 11th Annual Santa Fe Psychiatric Symposium, Santa Fe, NM.
- 28) **Oldham JM**: Personality Disorders: New Developments and Current Controversies. University of Buffalo Comprehensive Review of Psychiatry, Niagara Falls, NY.
- 29) **Oldham JM**: Treatment of Patients with Borderline Personality Disorder. Invited Lecture, 17th Annual Southwestern Psychiatric Symposium, Albuquerque, NM.
- 30) **Oldham JM**: Treatment of Patients with Borderline Personality Disorder. Grand Rounds, University of California Los Angeles Neuropsychiatric Institute, Los Angeles, CA.
- 31) **Oldham JM**: Borderline Personality Disorder: A Treatment Update. Invited Lecture, National Alliance for the Mentally Ill - New York State Annual Educational Conference, Albany, NY.
- 32) **Oldham JM**: The Christopher Pittman Case. Judges & Attorneys Conference, Institute of Psychiatry, Medical University of South Carolina, Charleston, SC.
- 33) Perez M, **de Arellano M, Danielson Kmett C, Rheingold A**, Silcott L: Delinquent behaviors in a National Sample Hispanic Adolescents. Poster presented at the Association for Behavioral and Cognitive Therapies, Washington, DC.
- 34) **Rheingold A**, Self-Brown S, Boettcher K, Sturtevant L, **Resnick H, Kilpatrick DG**: Primary prevention of child sexual abuse. Poster presented at the Association for Behavior and Cognitive Therapies, Washington, DC.
- 35) Sambamurti K, **Mintzer J**: Alzheimer's disease: Therapeutics and Drug Development. Grand Rounds, Department of Neurosciences, Medical University of South Carolina, Charleston, SC.

- 36) Schneider L, Tariot P, **Mintzer J**, Minkwitz M, Zhong K: Cerebrovascular adverse events and quetiapine: a pooled analysis of clinical trials and comparison with other atypical antipsychotics and haloperidol. Oral presentation given at the 12<sup>th</sup> Congress of the IPA, Stockholm, Sweden.
- 37) Self-Brown S, **Saunders BE**, Williams LM, **Hanson RF**, Cercone J, Fitzgerald M: Effects of community violence exposure and parental control on the psychological functioning of youth. Paper presented at the annual conference for International Society on Traumatic Stress Studies, Toronto, Canada.
- 38) **Stuart GW**: The Transformative Power of Choice. South Staffordshire Healthcare, NHS Trust, Staffordshire, England, 2005.
- 39) **Stuart GW**: Lessons Learned from US Prescribing. South Staffordshire Healthcare, NHS Trust, Staffordshire, England, 2005.
- 40) **Stuart GW**: Impacting Schizophrenia: Enhancing Treatment Outcomes. American Psychiatric Nurses Association, Columbia, SC.
- 41) **Upadhyaya HP**: Current issues in adolescent substance abuse: focus on ADHD and nicotine dependence, Fall Conference of the South Carolina Association of Alcoholism and Drug Abuse Counselors.
- 42) **Upadhyaya HP**: Adolescent substance abuse: What pediatricians need to know, Departments of Psychiatry and Pediatrics, K.G. Somaiya Medical College, Mumbai, India.
- 43) **Upadhyaya HP**: Current issues in adolescent substance abuse: data from the United States, Department of Psychiatry, Lokmanya Tilak Medical College, Mumbai, India.
- 44) Zhong K, Tariot P, Minkwitz M, Devine N, **Mintzer J**: Quetiapine in the treatment of agitation in patients with Alzheimer's Disease. Poster presented at the 12<sup>th</sup> Congress of the IPA, Stockholm, Sweden.

## Announcements

### Annual Service Awards

The following individuals from the Department of Psychiatry were recognized at the South Carolina Annual Service Awards Ceremony on September 22, 2005. Congratulations!

#### 10 YEARS

*Dr. Philippe Cunningham, Dr. Deborah Deas-Nesmith, Dr. Mark George,  
Dr. Susan Hardesty, Dr. Rochelle Hanson, Louise Haynes, Kathryn Marckel,  
Dr. Melisa Rowland, Dr. Susan Sonne*

#### 20 YEARS

*Dr. Charles Kellner, Marilyn Ruotolo, Pamela Thompson*

## Psychiatry Website Progress

*Kat Giarla, Psychiatry Website Coordinator*

When our Psychiatry Education section overhaul was completed in the Fall of 2005, we turned our attention to the development and improvement of our eight Psychiatry Research division websites. The Clinical Neuroscience Division and the Family Services Research Center are the most recent additions to our list of completed research websites. Much of our progress in these areas is due in large part to some very helpful individuals within the department who have contributed to site planning. I'd like to thank Angie Waldrop and Sudie Back (Clinical Neuroscience), Ann Ashby (Family Services), Suzanne Smith (Medical Student Education), Elaine Henry, Sherrie Osbourne, Yates Brown and Al Santos (Resident Education) for their time and effort. If you have not already done so, please take a moment to view our progress at [www.musc.edu/psychiatry](http://www.musc.edu/psychiatry).

Our current web development tool, SiteExecutive, is a comprehensive web site development and content management software application that allows content managers to directly create, update and manage a web site in an efficient and timely manner, while reducing dependency on web masters for routine content migration and updates. The program allows for decentralized content contribution to a centralized location presented through one or more web properties. Now that the bulk of the Psychiatry website has been constructed within SiteExecutive, we hope to train individuals from each research division and allow them to manage content for their respective areas.

In addition to our division websites we have continued to create individual faculty webpages, complete with photos, biosketches, and CVs. Since August of 2005, several, but not all, faculty members have submitted these materials and they now have their own webpage up and running. If you have an academic appointment in the Department of Psychiatry, and would like to have a webpage created for you, please send 1) a current photo, 2) a brief narrative biosketch, 3) contact information, and 4) a recent version of your CV to Kat Giarla [giarlak@musc.edu](mailto:giarlak@musc.edu).

I look forward to working with you on this ongoing project.

## Newsletter Submissions

**Liz Bednarowicz**  
Newsletter Coordinator  
Email: [bednaro@musc.edu](mailto:bednaro@musc.edu)

**Kat Giarla**  
Administrative Assistant  
Email: [giarlak@musc.edu](mailto:giarlak@musc.edu)

The Psychiatry Newsletter is published four times each year in the last week of the months of January, April, July, and October. Please submit all announcements for the Psychiatry Newsletter electronically to Kat Giarla. Deadlines for submissions are as follows:

Issue	Period Covered	Deadline
October 2005	July 1 - Sept. 30	October 7
January 2006	Oct. 1 - Dec. 31	January 6
April 2006	Jan. 1 - March 31	April 7
July 2006	April 1 - June 30	July 7