

Highlights of TSCI Epidemiology in South Carolina
Source: The South Carolina Statewide TSCI Surveillance and Registry, 1998-2012
Compiled and Analyzed by Anbesaw W. Selassie, MUSC[†]

1. The age-adjusted average annual incidence rate of spinal cord injury is 70 per 1,000,000 population. This rate is 75% higher than the estimated national average.
2. Over the course of 15 years, 619 persons with TSCI died after discharge from acute care hospitals. 51% of the 619 deaths occurred within the first year of hospital discharge. The five year survival rate of the total cohort 4,042 persons with TSCI was 85%.
3. There were 3,423 people with spinal cord injury known to be alive by the end of 2012. This makes the total prevalence of TSCI 78/1,000,000 population.
4. Age-adjusted incidence rate has been steadily increasing from 57 to 96 per million from 1998 to 2012, respectively. The rate of increase was significantly higher among AA compared to whites; among males than females.
5. The major causes of spinal cord injury are: Motor vehicle traffic injuries (42%), Fall (33%), Violence (10%), Sports (7%), and other causes (7%).
6. The levels of spinal cord injury noted during the period of observation are: 57% cervical, 21% thoracic, 12% lumbar and 11% sacral.
7. Complete cord lesions accounted for 12% of TSCI, of which 7% are tetraplegia and 5% are paraplegia. Incomplete cord lesions accounted 80% of TSCI, of which 54% are incomplete tetraplegia and 26% are incomplete paraplegia. Unspecified and ill-defined cord lesions including ASIA E accounted for 8%.
8. The fastest rate of acute TSCI increase is noted among persons older than 65 years of age and the most common cause of injury in this age group is fall.

[†] Data collection and maintenance of the spinal cord injury surveillance and registry is supported by the Spinal Cord Injury Research Fund Grant No. SCIRF1004

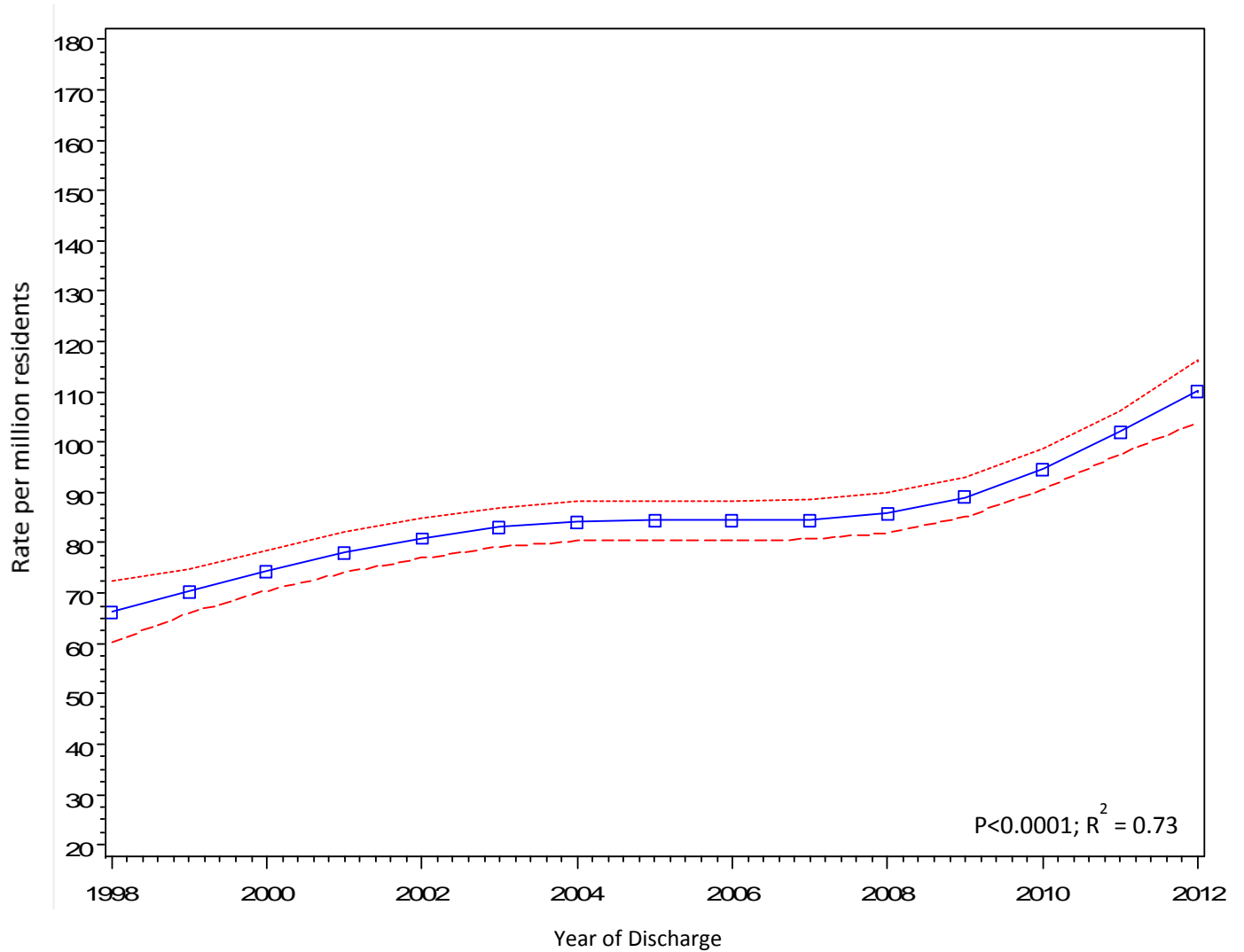


Figure 1. Overall temporal trends of TSCI hospital discharge rates by year, 1998-2012

Key: Blue line=smoothed trend line of rates; Red broken lines upper and lower 95% confidence limits of the rates

Total TSCI Rates in South Carolina 1998-2012

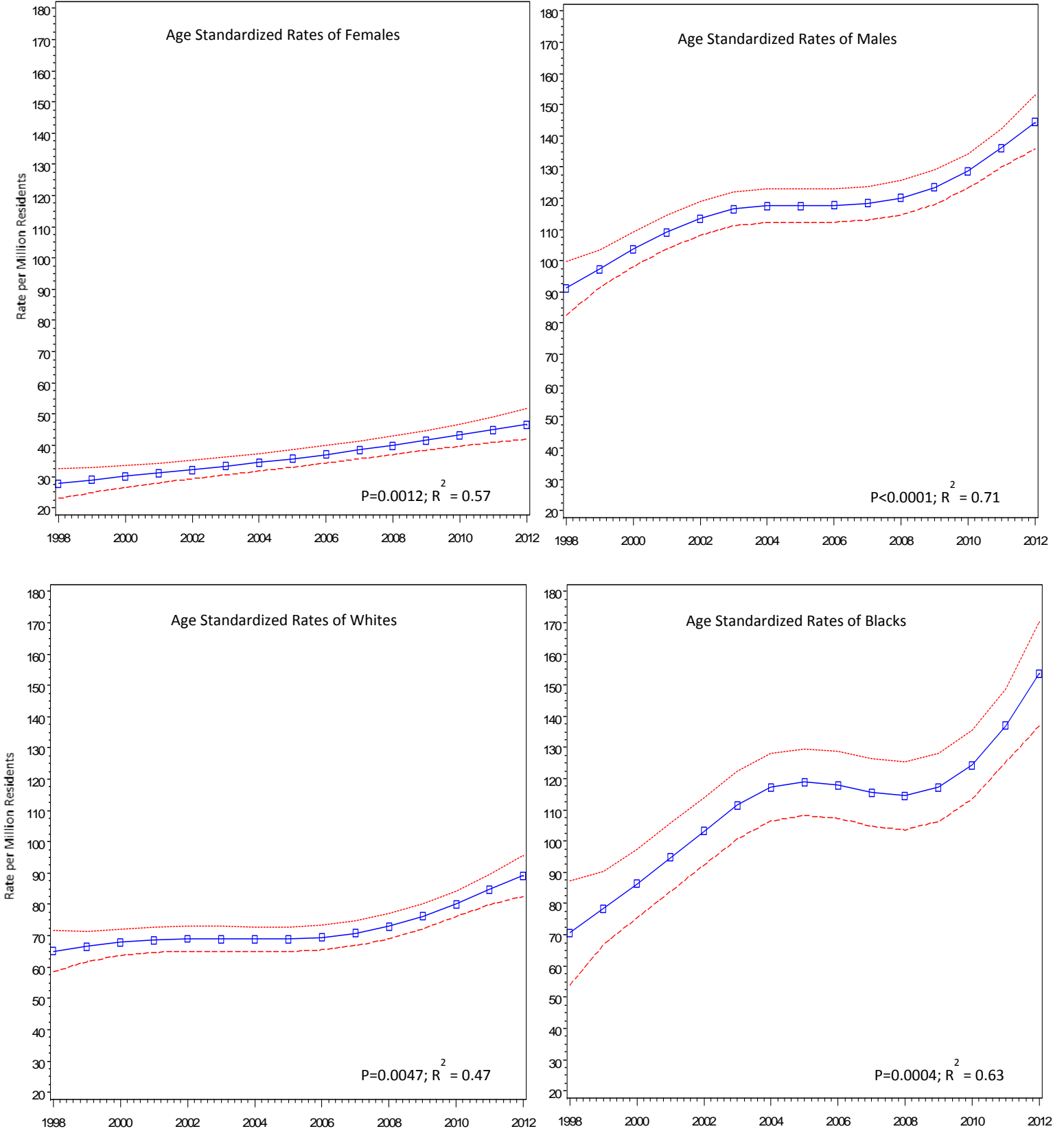


Figure 2. Temporal trends of TSCI hospital discharge rates by gender and race, 1998-2012

Key: Blue line=smoothed trend line of rates; Red broken lines upper and lower 95% confidence limits of the rates